

Fore and Aft

M A G A Z I N E



T H E Y A C H T H A R B O U R A S S O C I A T I O N

**TYHA
Website
Launch**

**Environmental
Awareness
Feature**



**TYHA
Futures
Networking**

**Bottle
Board
Challenge**

SEPT 2018



 SOLENT MARINE LTD



SIMBRO Pontoon System:

- Mooring fingers and pontoons located at 125mm intervals to allow any orientation and layout.
- The new pile brackets can be positioned at 50mm intervals
- Facility for mooring cleats every 180mm.
- Unique aluminium bearer design supports the deck and is completely protected by neoprene rubber to isolate galvanic corrosion.
- Large top entry service ducts provided on both sides of the walkways to allow easy provision of services to the berthing areas.
- Triangular plastic splays with rubber buttons for anti-slip properties.
- Plastic finger ends
- Specially designed and developed glass fibre reinforced concrete floats providing an exceptional buoyancy level of upto 2.5kn/m² - higher than recommended standards.



Tel: +44 (0) 2392 466666
www.solentmarine.com

In FOCUS



Jon White TYHA Manager

The amazing summer playing out in Europe is undoubtedly stimulating boaters out on the water; marinas are reporting increased boat movements, visitors, use of tenant services and fuel sales. Hopefully the conditions will extend from summer into autumn providing us with a long boating season which will undoubtedly benefit many marinas and related businesses.

Most of you will undoubtedly be extremely busy but I hope you have time to visit the new TYHA website launched in early August. The site uses the existing addresses you are familiar with:
www.tyha.co.uk
www.which-marina.com

The new site is fully mobile and tablet friendly combining a 'Find a Marina' function for customers, a nomination site for the Marina of the Year Awards and a member only trade website for marina and supplier members.

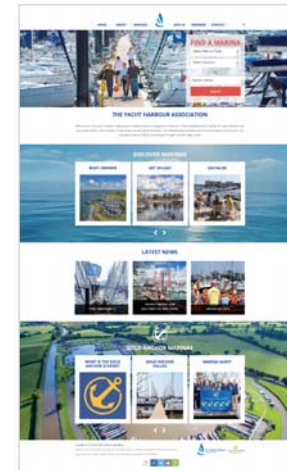
Please check that your marina is listed on the site and if not please contact Libby who will work with you to ensure you are: lgordon@britishmarine.co.uk

The member only area of the site is password protected and for those who have already given us your preferred password then that should work in combination with your email address. If you have not provided us with a password then please email Libby who will provide you with access.

Behind the password protected areas you will find the TYHA Code of Practice (7th Edition) and other documents and ideas that we hope you will find useful. We will continue to populate this area of the website with information that we hope you will find useful.

Please take some time to review the new website and feedback your thoughts and ideas as our objective is to have a website that provides our members with useful content and consumers with a portal that directs them too the best marinas in the world... your marinas.

Wishing you a successful remainder to your seasons.



“
New mobile friendly website
www.tyha.co.uk / www.which-marina.com

56 HARBOUR ASSIST TAKES TECHNOLOGY SOLUTIONS WORLDWIDE



CONTENTS

TYHA Networking Event	06
MD's 25 Years Service for Walcon	08
MDL's Ocean Village Extension	10
Suffolk Yacht Harbour	12
RYA - Safety Advisory Notice 2018	14
Britain's Hidden Gem	16
IGY - Porto Cervo Marina	18
Making Boating More Accessible	20
Fun in the Sun Festival	22
Regeneration of Swanwick Marina	24
Women in the Marina Industry	26
New TYHA Members	28
Channel Islands Summer Visit 2018	30
F&A Reduces Plastic Footprint Waste	32
Thames Board Challenge	34
Clean Seas with Seabin	36
The Green Blue	38
Helistrat & Premier Marinas	40
Çeşme Mussel Project	42
UK & Ireland Seabin Distributors	44
Eco-friendly Floating Homes	46
Tom Lord Awarded CMM	48
Gold Anchors	50
Premier's Swanwick Used Boat Show	52
Apprenticeship Standards Scheme	56
Technology Solutions Worldwide	58
Harbour Assist in the Cloud	60
Icomia World Marinas Conference	62
Bespoke Floating Breakwater	64
Walcon Acquires Docking Solutions	66

03 NEW TYHA WEBSITE LAUNCHED



34 THAMES BOARD CHALLENGE



40 ÇEŞME MUSSEL PROJECT



TYHA NETWORKING AND INFORMATION SHARING EVENT

17th October: Harleyford Golf Club
Harleyford
Henley Road
Marlow SL7 2SP

11.45 Tour of Harleyford Marina
13.30 Lunch
14.00 Identifying future marina customers

Most marinas are reporting that the average age of their customers is increasing. As a consequence they are looking ahead and trying to understand how to attract younger people into boating and into marinas. With significant generational change impacting established business models globally, the marina industry must be prepared for change and therefore TYHA have been working closely with British Marine with the objective of helping members navigate their businesses into the future.

The recent launch of the Segmentation and Barriers to Boating 2018 report, conducted for British Marine by market research experts Arkenford, provides valuable information which could help your business attract more customers... but how?

This interactive event is designed to help marinas interpret the Segmentation report and use it to identify and attract new customers. We are pleased to confirm that experts from Arkenford will be on hand to present their work and to facilitate this workshop.



For more information or to book please contact Libby – lgordon@britishmarine.co.uk



SAMUEL JOHN BOURNE

It is with sadness that we announce the sad passing of Sam Bourne. Sam was British Marine Federation President from 1995 – 1997. He was also on the board of ICOMIA and was Chairman and Chief Executive of TYHA Council for many years.

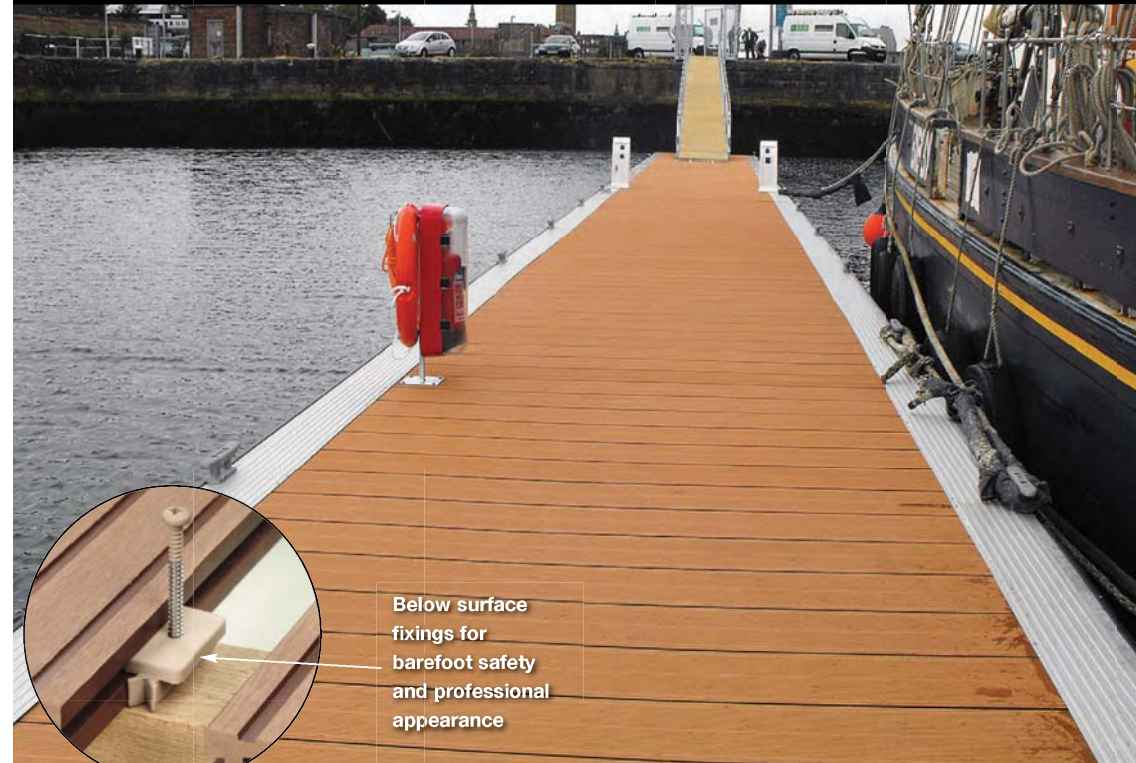
Sam served in the Navy for some 13 years, mostly in submarines and then spent 6 years in retail and again mostly with the John Lewis Partnership. He started in the marina business in developing his own small marina which was sold, and then he joined the Rank Organisation, which was bought out by Marina Developments.

Whilst with Marina Developments he managed Port Hamble Marina, Hamble Point Marina, Mercury Yacht Harbour and Northney Marina as a group before becoming development Director and then a Consultant.

More recently he was a Director of Castle Marinas, before retiring to enjoy his homes in Lyndhurst and Port Grimaud and a much loved 42' yacht, Combat, where he and Suzanne entertained their many friends.

Our sincerest condolences to Sam's wife, Suzanne and family from The Yacht Harbour Association and Council.

Composite Pontoon Decking



Below surface fixings for barefoot safety and professional appearance

Traditional timber appearance with composite technology

Applications:

Pontoons Marina Walkways
Fingers Mooring pontoons
Jetties Piers

Benefits:

Low maintenance Anti-slip surface
Recyclable materials Concealed fixings
Long lifespan 600mm span

September 2018 / Volume 36 / Issue 03

F&A Magazine - Published Quarterly: The publication of TYHA, the trade association for marinas and suppliers striving towards best practice within facilities in UK Coastal and Inland, and International waters. If you would like to unsubscribe to F&A magazine please email 'unsubscribe' to lgordon@britishmarine.co.uk or contact us by phone on +44 (0) 1784 223 817.

Dura Composites Ltd
Dura House, Telford Road,
Clacton-on-Sea,
Essex CO15 4LP
United Kingdom

Tel: +44 (0)1255 423601
Fax: +44 (0)1255 435426
info@dura.composites.com

www.dura.composites.com/ultra

Ultradeck

duraTM
composites

JAMES WALTERS

James Walters, managing director of Fareham-based Walcon Marine, has recently completed 25 years at the company. The occasion was marked at the company's main site at Segensworth, Hampshire, with the presentation of a ship's bell and celebratory champagne. During this time Walcon has grown to become the UK's leading builder and installer of the pontoons and walkways that form such an important part of the infrastructure that underpins the UK's leisure marine sector.

The son of Robin Walters, who founded the company over 50 years ago as Walters Construction, James was always destined for a career at the family firm and indeed while still at school worked in the factory during his summer holidays building pontoons and then installing them for TheYachtMarket.com Southampton Boat Show. After gaining his engineering degree he spent three years with construction firm Dean & Dyball, where he gained valuable experience in the in the construction industry both on-site and in the office, before joining Walcon.

The early 90s was a difficult period for businesses everywhere as the country recovered from recession and Walcon had been

through its own period of belt tightening. However contracts were being won and initial projects that James worked on as a project manager included Sovereign Harbour at Eastbourne, and the installation of a floating breakwater at the Town Quay in Southampton.

“ Walcon MD celebrates 25 years of service

“Not long after that we made the decision to start doing our own piling so as to offer the complete package to our clients,” James recalls. “We started out using an existing barge that we had, but the demand for the service led us to purchasing our first piling barge, the Walcon Wizard, which is still going strong today. This took us on from being simply a manufacturer of pontoons to an integrated marine civil engineering company.” Today the company owns three barges that it uses for piling as well as for transport and secure storage. They also allow it to take materials to sites for which access via land is restricted.

In his 25 years, James has seen big changes in the marina sector. “Marinas and their clients have become more demanding,” he says, “driven in part by higher expectations and new technologies, and also due to higher standards of health and safety. At the production level we have achieved significant advances in productivity through investment in new machinery and the use of computer-aided design. The result of these combined forces is that we now customise our products much more so as to meet the needs of individual customers.”

“I've been very fortunate to have had the opportunity to play a role in the business that my father founded back in 1963,” James says. “The marina and yacht harbour sector continues to be a great industry in which to work; full of people who are enthusiastic about what they do. The work is varied and has taken me all over the world. Over the years I have seen Walcon as a company develop an amazing bank of knowledge about sites all around the country and beyond, and we must be doing something right as many of our customers keep coming back for more. Our success so far has been based on experience, service and quality. Designing and building yacht harbours is what we do best!”



THE REFURBISHMENT AND EXTENSION BY WALCON MARINE OF MDL

The refurbishment and extension by Walcon Marine of MDL's Ocean Village Marina in Southampton has reached a milestone with Piers A to D completed and now in use. Three more remain to be finished with work now taking place on Pier E.

This has been a major project with Walcon involved from the outset in the design

of the new layout before manufacturing the new pontoons whilst removing the old infrastructure. This had been there for many years and is being replaced in a phased programme running alongside the installation of the new units. The Walcon Wizard barge is undertaking all the necessary piling extractions and driving.

The walkways, piers and pontoons have been constructed using Walcon's proven and durable System 21 product. Walcon's heavy-duty, wave-attenuating Waliflote pontoons have been used near the marina entrance to provide protection from excess wash and wave action when the wind is from the south-east. For the decking, MDL has specified a composite format. An attractive dark grey colour, it will be long-lasting as well as visually appealing.

A key feature of the new marina is the introduction of a Pier P, with the P standing for platinum. For higher paying clients Walcon has designed and built customised, high-spec pontoons that feature underdeck services rather than pedestals, branded cleats and smart services using keypads and mobiles. Other services and privileges are accessed onshore.

For more information about Walcon Marine visit the website www.walconmarine.com



“
The works are expected to be fully completed in the summer”



Equipment Training

The Pontoon & Dock Company are pleased to announce their provision of marina and boat yard equipment training and competency assessments. Using certified instructors, the training is available across a wide range of equipment at customers sites and is approved by some insurance providers. For more information on the training and competency assessments available, please contact us today.

- + Insurance Approved
- + Competency Assessments
- + Full Training
- + Available On Site
- + Training Resources
- + Manufacturer Approved
- + Certified Trainers

SUFFOLK YACHT HARBOUR

Sets Sail For TheYachtMarket.com
Southampton Boat Show

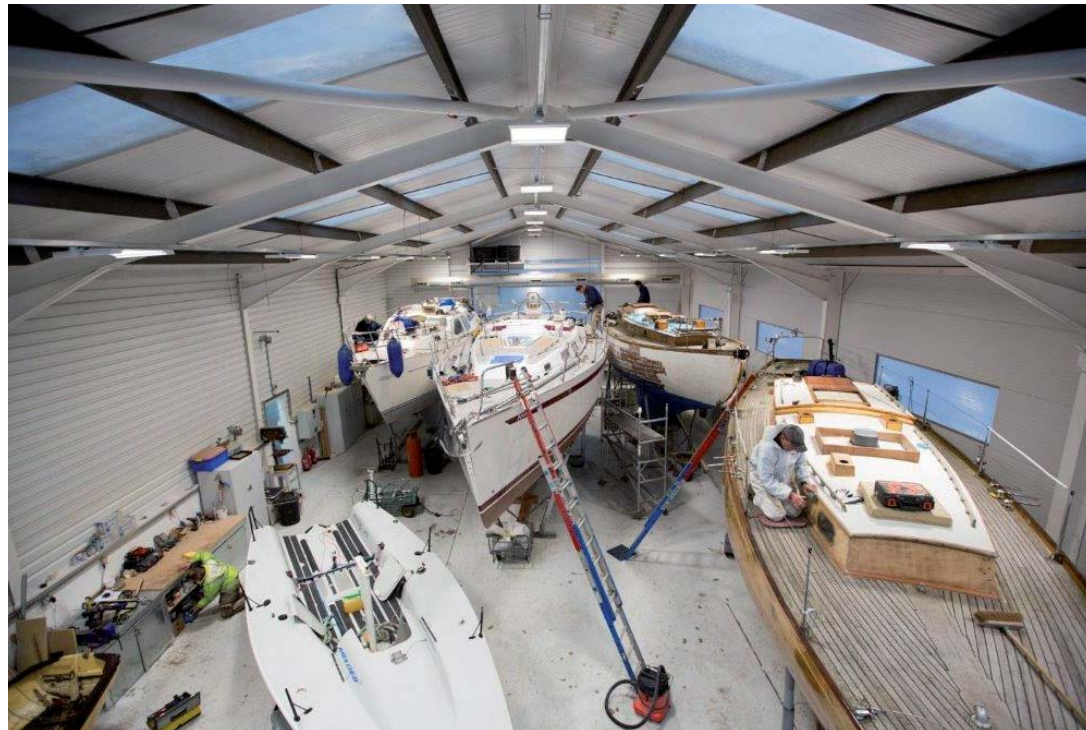
The east coast's leading independent marina will exhibit alongside a host of marine businesses. This September, Suffolk Yacht Harbour (SYH), along with six of its onsite marine businesses, will be attending TheYachtMarket.com Southampton Boat Show from 14th- 23rd September. Exhibiting on stand number J316, the portfolio of companies will be showcasing everything from boat building to marina berthing, sail making, rigging, marine electronics, stainless steel fabrication and sailing school courses.

SYH is the east coast's leading, privately owned, independent marina and serves as a hub for

sailors and power boaters looking for everything from marina berthing to maintenance work, chandlery equipment, sailing courses and regattas.

SYH managing director Jonathan Dyke comments, "Following the cancellation of the London Boat Show for 2019, TheYachtMarket.com Southampton Boat Show is a key date in our calendar. As the UK's largest marine show, it provides us with the perfect opportunity to engage with marine consumers and businesses from all over the country.

"With so many marine experts on one stand, visitors to the show will be able to receive expert advice to a wide range of boating queries.



Together with our onsite businesses, SYH carries out repairs and refits on vessels from all over the country, so whether you are from the east coast or further afield we invite everyone to come and find out more."

During the show, teams from SYH's onsite partners Classic Marine chandlery, Evolution Rigging, OneSails, Mr Stainless, Seapower Marine Electronics and East Anglian Sailing School will also be on hand to answer any queries.

Jonathan adds, "We are in the midst of an ongoing investment plan to ensure marina users and berth holders have access to the best possible facilities. This year, phase two of our state-of-the-art shower development project will be completed and we will be announcing exciting new environmental schemes later in the year."

To book an appointment to speak to any of the businesses on the SYH stand (J316) during the show, please email enquiries@syharbour.co.uk

RYA 2018 SAFETY ADVISORY NOTICE

FIFTH EDITION FEATURES SIX SAFETY TOPICS

Compiled for the recreational boating community, the RYA Safety Advisory Notice offers a simple digest of critical safety issues including those that have arisen from incidents and tragic accidents in the past year. The 2018 Safety Advisory Notice – features six key topics to help boaters think in practical terms about their safety afloat. These learning points supplement the RYA's key safety messages: look after yourself, have a plan, keep in touch and know your limits. Together they underpin the national governing body's ethos of

self-reliance and responsibility for safety on board.

Reviewing the Notice annually enables the RYA Safety Advisory Group to examine safety concerns that have emerged throughout the year and consolidate any lessons learnt.

The newly published fifth edition focuses on six key topics for boaters to think about:

- The correct stowing of liferafts
- Preventing lateral loading on safety line hooks
- DIY boat electrics
- Fire prevention and

fire-fighting equipment

- Fishing gear entanglements
- The importance of seeing and being seen at night.

The handy safety guide gets underway with a reminder that liferafts must be capable of being launched quickly and easily; it stresses the importance of stowing the liferaft correctly, so that it will work properly.

Building on the reminder in last year's Safety Advisory Notice of the importance of clipping on intelligently, the next topic advises boaters to prevent lateral loading on safety line hooks. The method

used to anchor the end of the safety line to a vessel should be arranged to ensure that the hook cannot become entangled with deck fittings or other equipment.

A common problem that the RYA has come across in older boats is 12V DC electrical systems that have been jury-rigged by the owner, or an electrician who is not experienced in the marine environment. Although 12V DC systems that are common on recreational craft are not going to create an electrocution hazard, the 2018 Safety Advisory Notice is reminding boaters that there are dangers that may catch out an amateur DIYer.

In addition to highlighting the importance of fire prevention in the advisory notice, the RYA provides a considerable amount of advice on fire prevention and fire-fighting equipment on its Safe

Boating hub at www.rya.org.uk/go/safety.

Snagging something around your prop, keel or rudder can cause problems ranging from the tiresome to the terrible. The RYA is urging boaters to avoid compounding the situation by jumping in to try and clear it, unless conditions are suitable and you are confident in your abilities.

The final topic for 2018's safety update focusses on navigation lights. These will tell a look-out what you are doing and which way you are travelling so that the steering and sailing rules can be correctly applied. If your navigation lights are unclear then others will not know what your intentions are. If they cannot be seen then others may not know you are there, particularly if you do not show up on radar.

RYA Cruising Manager, Stuart

Carruthers, says: "The RYA continues to work closely with our delivery partners and other UK agencies responsible for safety on the water and with the marine trade to progress our policy of information and education, which we believe is a powerful tool in fostering safe attitudes and behaviour on the water.

"By highlighting the causes of incidents and how they might have been prevented, it encourages us all to think about our own actions in a different light and above all help to make better decisions both before setting off and when out on the water."

Visit the RYA online safety hub at www.rya.org.uk/go/safety for your FREE copy of the 2018 Safety Advisory Notice, plus the previous four editions, and a wealth of practical advice and safety 'top tips' covering a vast array of boating activities.



SEVEN MAGIC FACTS ABOUT BRITAIN'S HIDDEN GEM

The River Great Ouse navigation is one of Britain's lesser discovered great places to wind down and step off the Earth for a while. When you include its tributaries – the rivers Cam, Lark, Little Ouse and Wissey, the Great Ouse offers approximately 140 miles of navigable waterway flowing through peaceful countryside and attractive rural villages and towns. That makes it fourth only in length to the mighty rivers Severn, Thames and Trent.

1 Boating is often portrayed as a pastime of 'fat cats' – but the reality is the Great Ouse and waterways like it are enjoyed by people from all walks of life, who choose to spend their relaxation time by going afloat, in all manner of ways, from kayaks to paddleboards and cruisers to narrowboats. A boat with accommodation to look after you for a weekend or more on the Great Ouse can be purchased for no more than the value of a new or secondhand car, but it

won't depreciate in the same way. You can start small too and still enjoy all the benefits of a life afloat – a 5m (16ft) motorboat will cost less than £2000 annually for a river licence, insurance and a pontoon mooring at a top-grade secure haven with full family facilities like those found at Hartford Marina.



2 If you need a change of pace in your life, then the Great Ouse offers that in abundance. You cruise on calm river waters at not much more than walking pace, taking in the Fenland landscape and breathtaking sights like the dominant towers of Ely Cathedral. There are plenty of rural visitor moorings too so you can lose yourself for a while. Or for days.

3 Have you ever thought it would be handy to park your bed outside the pub? Dream about it no more. On a quick count, we found at least 30 pubs that are by the water, or within easy walking distance from it, between Denver and Bedford. Plus, you'll find a lot of other cafes and restaurants to cater for all tastes.

4 Although it runs through the Fens, which we all like to think of as flat, the Great Ouse and its tributaries use a total of 22 locks to deal with the river's gentle descent to the sea. These are some of the shallowest locks in Britain and are mostly operated by boat owners themselves, an easy and fascinating process in which you can involve family and friends. Cruising time between locks varies between around 30 minutes and four hours, depending on where you are.

5 Boating on the Great Ouse not only opens a unique perspective on the Fenland countryside but it also provides a very different viewpoint of the cities, towns

and villages along its path. These include Bedford, St Neots, Huntingdon and Godmanchester, Hartford, Hemingford Grey, St Ives, Earith, Cambridge (via the Cam) and Ely. That also illustrates just how accessible the Great Ouse is, with excellent road and rail connections to quickly transport you from work to play at weekends and even perhaps a cheeky midweek visit on long summer evenings.

6 Given the regularity of towns and villages along your path, you are never short of things to do. But for extra interest there are many additional features in this historic area. For example, you can learn about how the Fens are managed by an incredible system of drains and pumping stations at the Prickwillow Museum in Ely. Or visit the wildlife sanctuaries of the Ouse Washes and Welney Wildfowl Trust. Or perhaps swat up at the schoolhouse of Britain's original republican by visiting the Cromwell Museum in Huntingdon.

7 The Great Ouse might be a hidden gem and, in many respects, a lazy backwater. But it also enjoys significant investment too. Hartford Marina, perfectly placed in the middle of the navigation for explorations to the west or east, has been a popular place for people to base their boats since it was first developed in the 1960s. Now it is receiving more than £1m of upgrade work, to provide moorings on the very

latest design of pontoons. There's every conceivable service here for you and your boat, including knowledgeable and friendly staff, a boat sales operation, on-site restaurant, a laid back social club and seasonal canoe hire.

Experience the Great Ouse for yourself

To discover more about the Great Ouse, its connecting Fenland waterways and the people from every walk of life that call it their getaway second home, then please get in touch. Here at Hartford Marina we are perfectly placed to show you something of the delights of the river, how to experience and get great enjoyment from it. We can also explain the significance to the wider community of what happens on the water.



PORTO CERVO MARINA



practices and operating procedures, which have become the trademark of all marinas within the IGY portfolio.

“The IGY Mobilization Team are extremely excited to have been given the opportunity to work alongside the PCM yard and marina employees to further enhance its already world-class customer experience,” says Kenny Jones MBE, Executive Vice President of Operations of IGY Marinas.

Porto Cervo Marina is located 130 nautical miles off the west coast of mainland Italy, on the beautiful island of Sardinia. Porto Cervo, founded by HH the Aga Khan, serves as a haven along the 55km coastline of Costa Smeralda and provides easy access to some of the most desired cruising grounds in the Mediterranean including; the Amalfi Coast, the Italian Riviera, and the Cote D’Azur. The marina facility offers high-speed fueling, waste management, yacht services, provisioning and world-class on-site dining and shopping. Surrounding the marina is an abundance of nightlife, entertainment on the resort of Porto Cervo, along with breathtaking beaches and turquoise blue waters.

International marina operator and developer, Island Global Yachting (IGY Marinas), announced further expansion of its marina collection into the Mediterranean, with the addition of Marina di Porto Cervo in Northern Sardinia - Italy. The 700-slip facility, owned by Porto Cervo Marina S.R.L (PCM), provides luxury yachting accommodations for yachts up to 160 meters (525 feet). IGY Marinas will support PCM in the management of the marina and boatyard operations including marketing, branding, and customer service.

IGY Marinas continues with its strategic approach in growing its unique global marina destination portfolio. “We are extremely excited to be part of one of the world’s leading tourist and yachting destinations. Italy, and Sardinia in particular, is rich in yachting traditions and sits at the

heart of the global super-yachting business. We are honored to have the opportunity to partner with the owners of Porto Cervo Marina and the historic Yacht Club Costa Smeralda, as well as the local community in Sardinia, to bring value to clients, customers, and stakeholders. With the addition of Porto Cervo Marina comes an opportunity to integrate rich traditions with IGY’s innovative approach to hospitality and services, which has been developed using best practices incorporated from our experience across 10 countries. We are looking forward to the upcoming season and growing our business in the Mediterranean,” stated Tom Mukamal, CEO of IGY Marinas. With the upcoming 2018 yachting season in the Mediterranean, the operations team of IGY Marinas is working closely with Executive Team of PCM to implement best

Follow IGY Marinas on [www.Facebook.com/IGYMarinas](https://www.facebook.com/IGYMarinas) or [@IGYMarinas](https://www.instagram.com/IGYMarinas). Discover the network of IGY Marinas at www.IGYMarinas.com



Office for Low Emission Vehicles

GRANT FUNDED

ELECTRIC VEHICLE CHARGING SOLUTIONS

MARINA EV CHARGING SOLUTIONS



DOMESTIC



WORKPLACE



PUBLIC

- ✓ Over **95,000** EV charging points manufactured and supplied
- ✓ The **UK’s largest range** of EV charging points
- ✓ EV charging points for the **home, business and public** sector

ROLEC EV

For more details contact Rolec’s technical/support/sales team

t: +44 (0) 1205 724754
e: rolec@rolecserv.co.uk

[@RolecEV](https://twitter.com/RolecEV)
www.rolecserv.com

PLYMOUTH BUSINESS ENTERS THE SHARING ECONOMY TO MAKE BOATING MORE ACCESSIBLE



and to inspire the next generation of water users. We're certainly hoping that our new Boat Club allows families around Plymouth and further afield to enjoy low cost, hassle-free boating. We're confident that once families have experienced the fun of getting out on the water, they'll be hooked for life!"

Furthermore, in 2018 the boatyard celebrated their ten year anniversary with an environmentally-inspired boating festival weekend on 14th and 15th July. The festival, dubbed "Turning the Tide on Plymouth" included a mass on-water litter pick up and pop-up festival hub with a range of eco-friendly marine products, new boats and the Boat Club's Beneteau Barracuda. The Boat Club was also be on display at the Yealmpton Show.

With Plymouth having experienced one of the hottest summers ever more and more people are looking to spend their leisure time on or near the water; for those wanting to take the next step Yacht Haven Quay Boat Club provides the perfect opportunity to get on the water easily and affordably!

A Plymouth business has come up with an innovative way for wannabe boaters to get on the water this summer, and enjoy the exclusive use of a new motorboat for less than £100 a day!

Yacht Haven Quay, a Plymstock boatyard which is home to the UK's largest 'indoor marina', has just launched a Boat Club – a low cost way to get afloat giving members shared access to a brand new motorboat.


Manager Will Rahder says the idea came from the shared economy concept, led by the likes of AirBnB and Uber. "Everyone wants to enjoy being on the water, but modern trends show that ownership of boats is decreasing, much in the same way as cars and homes", Will explains. "So we decided

to create a Boat Club where members can simply use a really high quality and versatile boat as they wish, and we'll look after all the other elements that come with ownership such as maintenance, depreciation and storage".

The boatyard has added extra safety features to a brand new 7metre Beneteau Barracuda motorboat to satisfy MCA approval. As a result, users only need a standard RYA Powerboat Level 2 qualification to take the boat out and any necessary training can be arranged as part of their membership.


Furthermore, Will is hoping that the scheme will inspire families and younger generations to get afloat. "Everyone in the marine industry is trying to make boating more accessible

For more details on the Boat Club, visit yachthavens.com/boatclub or call 01752 481190




ONE STOP PUMP SHOP

A Pump Technology Ltd. Group Company




LeeSan


Marine • Welfare • Leisure




LeeStrom




Complete Pump-Out Range For Every Application




Simple Operation




Efficient & Reliable



Clean & Compact



Bespoke Applications



Mobile Solutions

T: 01295 770000 sales@leesan.com

FUN IN THE SUN AT THE FESTIVAL ON THE QUAY

It was a great day for all the family, berth holders and local community who were out in force around the Marina in Portishead.

The Newfoundland Rescue Dogs started the day at 10am where they were helping to raise awareness and funds for Bath Cats and Dogs home. They were joined by the lovely Olympic Gold Medallist Amy Williams MBE who happily took the plunge in the Marina to be rescued for the charity.

At midday the stalls opened and were busy all afternoon selling their wonderful offerings of beautiful paintings by local artist Michelle Lucking, Jewellery by Mark in his classic VW Camper 'Banksy' to name a few, and the RNLI with their teams of

volunteers, inflatable lifeboat and informative and educating Beach Buddies puppet shows.

The Portishead Gig Club and supporters enjoyed the naming ceremony of their brand-new Gig 'Phoenix' the service was conducted by RNLI Padre, Revd Philip Auden MNM MNI DL and then it was over to the fantastic Barnacle Buoys a group of local sea shanty singers that helped them to celebrate. Just as they

“
Portishead Marina delights boating enthusiasts

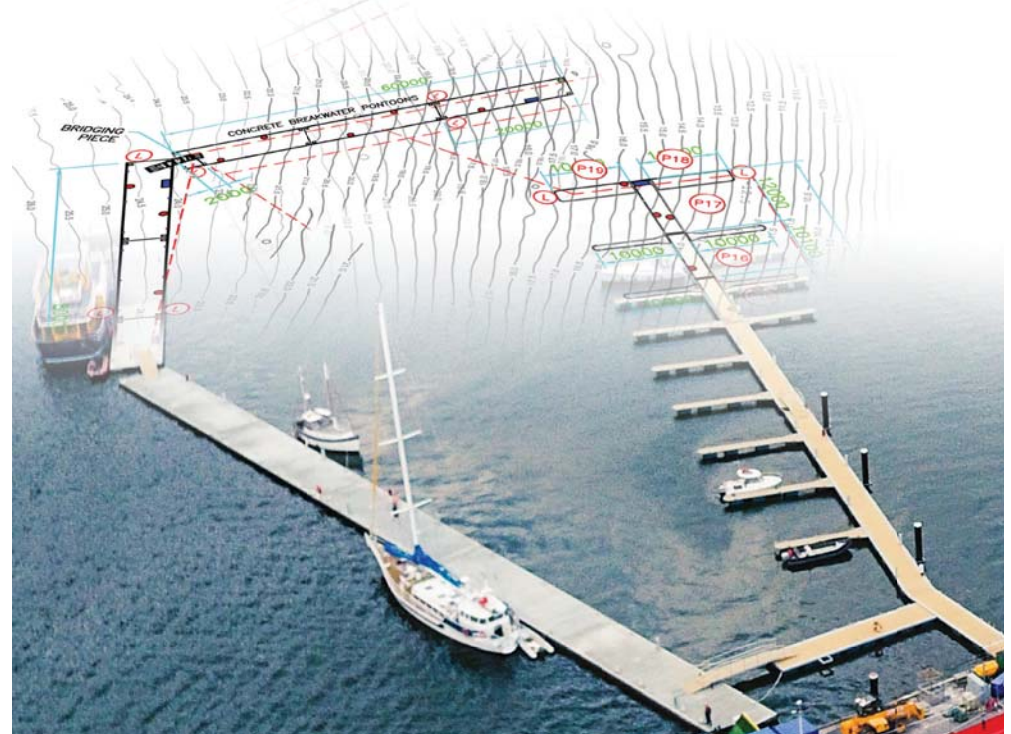
started their set, the Lifeboat crew were paged by the Coastguards to go and help someone in trouble, leaving the Festival a stark reminder of what the volunteers do.

The brilliant Sax in the City jazz band took the stage for a couple of hours and were then followed by the very popular band 'Chess Club Heroes' who took us in to the evening, the time to party!

Marina Manager Keith Berry said, 'It was great to see so much support for the event here at Portishead Marina, special thanks go to the Marina team, H&W Pub, the RNLI and stall holders for making a good day great!! We were lucky with the weather and everyone seemed to be having a great time.'



from concept
to reality with
full integrity



With a proficiency built up over 25 years through meticulous **design, manufacture** and **installation** of floating pontoons and breakwaters, it's little wonder that we have earned the trust of so many clients to deliver solutions that bring their marinas from concept to reality. Float your plans by us and turn your ideas into profitable investment.

- Pontoons
- Breakwaters
- Commercial Berthing
- Access Gangways
- Marina Accessories
- Moorings Services
- Piling
- Project Management

The UK's only producer of CONCRETE BREAKWATERS

Your Trusted Performance Partner in Marina, Breakwater and Pontoon installation

gaelforcemarinas.com

Head office +44 (0)1463 229401
Email marinas@gaelforcegroup.com



PREMIER REVEALS REVISED PLANS FOR THE REGENERATION OF SWANWICK MARINA

Premier Marinas has revised its plans to complete the regeneration of Swanwick Marina following its £5.8m investment in a new boatyard in 2014. The new plans represent an investment of £8m and show a number of innovative features: a unique modern renewal of the floating marina to make accessing and using the pontoons safer and easier; a welcoming bridgehead building and a dedicated berth holders' lounge. Plus, at the heart of the site, overlooking the water, a new food and beverage building is proposed and there are plans for an impressive Pavilion

building to house boat sales and marine businesses (subject to planning approval).

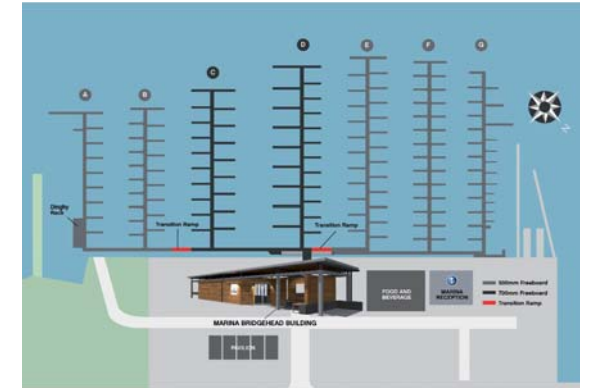
The eastern side of the marina will be used for additional boat storage ashore and dedicated berth holder parking; for the future, Premier is considering a range of marine based options for this land.

A new floating marina with innovative design features for safety and ease of use

The new floating marina will create 333 berths (6m-40m); an increase of 59 on the current configuration. Uniquely, all berth holders will enjoy a berth measuring at least the length of their boat. This feature, coupled with fairway and pontoon specifications that exceed industry standards, will make berthing easier and safer - particularly for power boat owners stepping directly onto their pontoon from the back of their boat.

But one of the most innovative aspects of Premier's plans lies at the centre section of the marina where the berths will be set 700mm above water level (200mm above standard height) to reduce customers' deck to pontoon 'jump down' when berthing their vessel.

All the pontoons will be accessed via a single central bridgehead which has again been designed to make life easier by presenting a substantially lower access gradient than the current bridgeheads. During the in-water redevelopment the marina basin will be dredged.



At the top of the bridgehead berth holders will find a new bridgehead building providing a customer service and information point, trolley station, bin store and secure access to the pontoons. Dedicated drop off/pick up parking is planned in front of the building to ensure that customers can get close to the bridgehead when provisioning up.

For further information please contact Barbara Liddell, Head of Marketing: barbaral@premiermarinas.com 01489 885000

The renewal of the floating marina will be in two phases
Phase 1 will begin in October 2018 with the renewal of the pontoons on the eastern side of the marina and the build of a 40 slot dinghy rack - completion will be April 2019. Phase 2 will take place in the winter of 2019/20 and will see the outstanding pontoons in the plan renewed and the construction of the new bridgehead building. The construction of the new Pavilion building is also scheduled for the winter of 2019/20 and the new food and beverage building will be completed in 2021.

WOMEN IN THE MARINA INDUSTRY - TRANSEUROPE MARINAS

At the time of writing, only 12% of the 82 registered Certified Marina Managers are women which could be construed as a slightly lopsided gender representation. Data is not yet available reflecting gender employment in the industry from bodies such as the European Boating Industry or British Marine but is there cause for concern?

Within the TransEurope Marinas network, where women are occupy a slightly more healthy 16% of the top managerial positions, in addition to two female harbour masters, these marinas are notably amongst some of the most successful, demonstrating positive customer responses and an assured trajectory; almost all of them having been awarded either four or five Gold Anchors



or the Blue Flag. Our more progressive members in the Netherlands, where it might be argued that civic culture encourages a more equal gender balance in the workplace, represent a proud 60% of female marina managers and amongst them, indeed throughout the entire TransEurope network, 1400-berth Marina Jachthaven Biesbosch is the only member where for the last year, both the

manager and harbour master are women.

To help contribute towards a better understanding of the situation, ten women in senior roles within member marinas completed a survey. Exploring barriers that might prevent women from progressing to top level jobs in the industry, those surveyed were asked why they considered gender inequality to be so predominant in the nautical sphere. Perhaps surprisingly, given the figures, they were mostly pretty stoical about the gender gap, perceiving a significant shift in the last decade towards an increase in women in the sector.

It is worth recalling at this point that TransEurope Marinas began as a cooperative network of primarily family-run marinas, seeking to bolster commercial competitiveness against the threat



of larger chains. Currently half of the group's female managers come from family-run marinas, with some having grown up in a marina environment. This familiarity with every aspect of the business has afforded them a very valuable perspective.

When asked what they considered to be their most important contribution to their business, almost all responses involved customer service. Beyond this, refurbishment of facilities, training, improved sales and staff training all followed. Interestingly, when viewed from a visitor perspective, the location was the most commonly perceived attraction together with the appeal of a facility that was visibly well cared for and offered plenty of good services. Managers described receiving feedback from berth-holders and visitors that valued comfort and security, professionalism, flexibility and customer care.

Proposals for how best to attract more women to marina employment including tackling existing gender perceptions of the type of work involved and an apparent lack of opportunities for women. Flexible working hours and weekend child-care were mentioned and some

proposed wording job advertisements differently. A popular response drew on the need for more accessibly-priced training qualification options to bolster skills and increase confidence. A lack of women role-models was another compelling observation and it is



perhaps time to give more credit to some impressive stories.

As a response, TransEurope Marinas has agreed to continue looking at how best to encourage women to find employment in marinas and plans to help sponsor some of the group's staff members taking part in the next IMM course in Venice this coming October as a means of facilitating costs and encouraging participation.

Conclusion

A more carefully considered gender perspective could help us give more credence to women's roles in the industry and prevent reinforcing a belief that men are perhaps better suited to marina management. Across the board, women are seen to be modernising the marina business model to reflect one that is more oriented towards customer service and improved sales and visibility. There is a tangible focus on visitor wellbeing and comfort, and particularly within family-run marinas, a strong sense of community with additional sports and leisure facilities provided to improve the customer experience. All this demonstrably reflects very positively on the industry, helping to ensure a sustainable future.

TransEurope Marinas
www.transeuropemarinas.com

NEW TYHA MEMBERS

UNITED KINGDOM

LIVERPOOL MARINA

Coburg Wharf, Sefton Street, Liverpool
Merseyside, L3 4BP

Contact : Mr David Beard
Tel: +44 0151 707 6777
www.liverpoolmarina.com

A unique situation in the heart of Liverpool offering unlimited social and cultural opportunities. Boat moorings comprise of 350 berths across two docks. The marina offers berthing for canal boats, yachts and motor boats as well as commercial vessels.



QUAY LANE BOATYARD LTD

Quay Lane, Hardway, Gosport
Hampshire, PO12 4LJ

Contact : Mr Edmond O'Connor
Tel: 02392 524214
www.quaylaneboatyard.co.uk

Moorings are based around Quay Lane, Bomb Ketch and Peewit Island. The boatyard offers hard standing and storage area ashore for boats and have facilities to lift into the yard from the water boats of up to 10 tons.



TO BECOME A TYHA MEMBER

PLEASE CONTACT LIBBY GORDON

L.Gordon@britishmarine.co.uk



 **The Pontoon & Dock
Company Ltd**
QUALITY MARINA EQUIPMENT

Certified Examination & Inspection Of Boat Yard Equipment

The Pontoon & Dock Company offer a comprehensive range of marine and boat yard services. A team comprised of highly experienced marine operations professionals can bring a wealth of knowledge to your site.

Whatever boat yard service you require, whether, Lifting equipment examinations, repairs and maintenance on your machines or advice and consultancy on boatyard operations, get in touch.

- + Insurance Approved
- + Roodberg & NPORS Training
- + Full Range Of Yard Services
- + Highly Experienced Personnel
- + Customer Focused
- + Manufacturer Approved
- + Refurbishment Of Used Machines

+44 (0)1283 208891 | www.pontoonanddock.com | sales@pontoonanddock.com

TYHA SUMMER VISIT 2018

Hot, sunny weather yet again prevailed over the 2018 TYHA Summer Visit to the friendly and beautiful Channel Islands. Twenty five TYHA members enjoyed a perfect balance of marina studies and cultural experiences over three days which were excellently organised by TYHA's Libby Gordon.

The visit commenced on the first day with an interesting tour of the Jersey Marina basins hosted by Group Leisure Manager, Mike Tait, followed by a tour of La Mare Vineyard with lunch at La Mare Bistro in the grounds. The afternoon included a fascinating visit to the Jersey War Tunnels museum exhibition which provided a detailed insight into the islands war history. The setting of a second world war underground hospital brought the experience to life as the escape tunnel team building challenge that followed!

Following a pleasant networking evening the group rose early the following morning and headed back to Jersey

Marinas boarding two motorboats and a RIB they headed north west for Guernsey. After an exhilarating journey the three boats regrouped in St Peter Port and were treated to a tour around the Guernsey Marina basins by the Harbour Master Steve Lowe. A short coach ride through some lovely villages took the tour to Beaucette Marina, a stunning marina sunk into the rock face. Amongst other enticing features is Beaucette Marina Bistro where the group enjoyed a wonderful lunch hosted by Steve Haines the owner of the marina. Followed by a fascinating tour of this unique marina conducted by Steve and his marina manager Richard Stephens, the group were persuaded to finish their questions and picture taking to head back to the port as it was time to head back to Jersey before the forecasted wind increase. Although a little more undulating (and wet for those in the RIB!) on the way back everyone returned with a smile on their faces which was enhanced by spending time with

a group of dolphins, the perfect end to the day. More food and networking followed and an early night for most.

Everyone was happy for a leisurely breakfast on the last day and then it was straight to the airport but not to catch flights! As the Ports of Jersey includes the airport Mike Tait had organised for our group to have a guided tour around Jersey Air Traffic Control. Splitting into two groups we were shown the operations that controlled the airspace and, from the tower, the operations responsible for taxiing, take off and landings. Then it was off to lunch at The Royal Channel Islands Yacht Club overlooking the beach, rocks and castles prior to returning to the airport for our flights home.

Our thanks to all those who supported our 2018 Summer Visit to the Channel Islands. We'd like to thank Dura Composites for their kind sponsorship, Libby for her great organisation and Mike Tait - advisor, facilitator and all round nice chap.

“
Island Hopping - two beautiful Channel Island boating destinations



TYHA GOES GREEN TO REDUCE PLASTIC FOOTPRINT

Over the past few editions of Fore & Aft we have featured articles on improving environmental practices through using your marina workboat more efficiently or installing Seabin's to collect floating oil and waste. There has also been a lot of social media and press focus recently on cleaning our beaches of the ever-growing plastic waste which is causing significant

“
Paper to replace plastic in recycling push for F&A

environmental damage to our oceans; as highlighted in the BBC's Blue Planet programme. We recently received an email

from Stephen and Sandra Goldbrough of Warings Green Wharf pointing out that Fore & Aft is distributed in a plastic wrapper and TYHA should be leading the way on using more environmentally friendly products and promoting awareness. Prompted by their email, we discussed and agreed with our mailing company that in future Fore & Aft magazine will be sent out in paper envelopes.

Inland and Coastal
Marina Systems

SETTING THE STANDARD OF EXCELLENCE

Wherever the site, whatever the size we have the bespoke marina berthing and protection solution. Let us design and build your next project.

Banagher, Ireland (Head Office): +353 579153963
 Lossiemouth, Scotland (Sales Office): +44 1343 813233
 Southampton, England (Sales Office): +44 239 4002797

Email: sales@inlandandcoastal.com Website: www.inlandandcoastal.com

SUBLIFT

BY SWEDE SHIP

THE SAFE, COMPACT, SELF-PROPELLED SUBMERISBLE BOAT CARRIAGE



For the BEST OFFER
 contact Sublift!

For experienced LOCAL SERVICE
 call Alan Flipping
 0778 842 80 66



sales@sublift.se | www.sublift.se

THAMES BOARD CHALLENGE

St. Katharine Docks, operated and managed by Camper & Nicholson's Marinas, continue to fight against plastics in the ocean with the Thames paddle board challenge

St. Katharine Docks, central London's only marina, is committed to continuing the fight against plastics in the ocean. Working with The Whale Company, the challenge was to paddle the length of the Thames on recycled plastic bottle SUPs and to deliver a 'Message in a Bottle' to Parliament.

St. Katharine Docks is to host the closing ceremony.

Carlos De Sousa and Carolyn Newton from The Whale Company undertook the 17-day 'Source to Sea' challenge to paddle board the entire length of the River Thames from the navigable source at Lechlade to the sea at Gravesend.

They will paddle over 300km on their SUPs (Stand Up Paddle Boards) made out of recycled plastic bottles to raise awareness of plastic pollution in our waterways. Along the way, they will collect thoughts and messages from school children in

their 'Message in a Bottle' campaign which aims to raise awareness of the issue in Parliament and will see the couple deliver the messages directly to Government.

In 2017, the Whale Company undertook 12 paddle board marathons in 12 European countries, documenting the plastic pollution that they saw and catching the eye of European media.

Participants are invited to join one or more legs of the Source to Sea challenge in a show of solidarity behind the cause.

Carolyn Newton, Founder of



The Whale Company, said: "At The Whale Company we aim to inspire people to rebuild connections with nature and cherish the world around us. Clearly plastic pollution in our

waterways has become such a threat that we are in danger of irreversibly damaging the purity of our rivers and seas and in the process harming every species that reside in the water. We are undertaking this challenge to demonstrate that paddle boarding and water sports are a brilliant way for everyone to get out on the water and reconnect with nature, whilst galvanising the support of the entire community to influence decision-makers and push this issue even further up the agenda." Claire Daniels, Events & Marketing Manager at St. Katharine Docks said: "St. Katharine Docks is committed to support the international recognition of eco-friendly marinas and destinations. The Whale Company and the Thames paddle

board challenge is a great way to further engage with our own greener marina objectives and help the efforts of The Whale Company!"

To celebrate the completion of this rare feat and provide a further opportunity to spread the message, a closing ceremony was held on Friday 29th June at St Katharine Docks. Press were invited to attend the closing ceremony to interview the participants and have a go on the SUP's.



MARINAS CLEAN UP PLASTIC SOUP...

Marina Muiderzand in Almere is the first Dutch yacht harbour with a Seabin. This floating rubbish bin extracts plastic and other debris from the water. This prevents any further build up of the plastic soup and other pollution in seas and oceans.

The Seabin was invented by two Australian surfers and boat builders: Andrew Turton and Pete Ceglinski. They were concerned about the increasing pollution of the oceans. 'If we can have a rubbish bin on land, why not one in the water?' they wondered. Following years of testing, they developed a floating rubbish bin which you can put in the water of any harbour or dock. Using an electric water pump, the

Seabin filters out plastic bottles, cups, bags, tiny pieces of plastic, oil and other waste floating on the water, without endangering fish. One Seabin can thus remove 83,000 plastic bags and 20,000 plastic bottles in a year. That's half a ton of rubbish. All the plastic is then recycled.

Partnership Seabin and Thuishavens

Two years ago, Nanke den Daas, director of Thuishavens, met the two surf dudes during the METS international trade show in Amsterdam. She was so enthusiastic about their invention that she decided to support their crowdfunding project. With the production ready, the company has been

chosen to launch the Seabin in the Netherlands. Besides Marina Muiderzand, Thuishavens also manages Jachthaven Bruinisse, Jachthaven Naarden and Dorado Beach in Olburgen. In the marinas, the focus is on saving water and energy, reusing materials, separating waste and green energy. No harmful pesticides are used here. The marinas have also been awarded a blue flag for many years. Additionally, Thuishavens supports the Plastic Soup Foundation and the 'By the Ocean we Unite' foundation, which want to tackle the plastic pollution of the seawater at the source.

Awareness

If the Seabin proves successful at Marina Muiderzand, the floating rubbish bin will be introduced in more marinas. "In our marinas, we are committed to safeguarding people and the planet. For that reason, we want to keep the water as clean as possible. We want to have the cleanest marinas in the Netherlands," says Nanke den Daas. "The Seabin is totally in line with that vision. We can't remove the plastic in the seas, but we want to show a good example. Our aim is to create more awareness for how water sports enthusiasts and our mooring holders contribute to keeping the water clean in our marinas and sailing area. The real solution is to stop polluting the water. So clear up your rubbish. In that

context, we also visit local schools as an ambassador for Seabin and invite pupils to come and see how Seabins work."

Wide media attention

In recent weeks, Seabins have been installed in marinas all over the world.

In the UK, the well known Land Rover BAR yacht racing team launched the first Seabin in October. This was a media spectacle which received attention from the BBC and The Times, among others. Yesterday, it was the turn of the Netherlands. CEO and co-founder Pete Ceglinski attended the launch of the Seabin in Almere. "Thuishavens was one of the first to support our crowdfunding campaign. So my team and I are delighted with the launch of what



we hope will be many Seabins in the Netherlands, making the waterways cleaner," he says. "We've seen such amazing enthusiasm here. Not only for Seabin the product, but also for the associated educational and research, such as the practical programme for different groups in society."

WITH

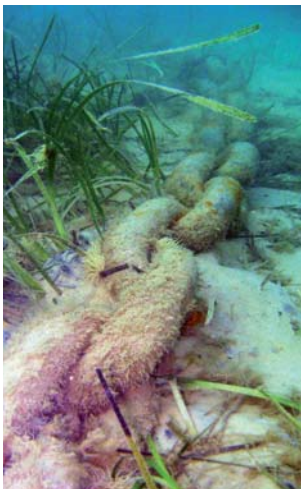
SEABIN

“
Marina Muiderzand first to showcase
floating rubbish bin

THE GREEN BLUE ASKS IS YOUR BOATING SEAGRASS FRIENDLY?

Are there ways that boaters can minimise the impact of anchoring and mooring on sensitive seabed plants and animals?

Whether you choose to anchor or moor your boat, some seabed habitats may be sensitive to these activities. The Green Blue, the RYA's joint environment campaign with British Marine, is seeking to raise awareness of the many simple things you can do to both prevent damage to your boat and reduce your impact on the environment too.



Work on Marine Conservation Zones in England has generated all sorts of discussions around anchoring pressure and the provision of moorings. In response, the RYA joined forces with industry partners to help explore the types and benefits of Environmentally Friendly Moorings (EFMs) and launched a new information hub to bring together current findings and views.

A workshop on EFMs, held by the National Trust with Natural England and the Marine Management Organisation, brought together all parties with an interest in EFMs to discuss their status, current projects, and future. Discussions involved users, regulators and advisors.

As a result of this workshop, which identified the need to improve the sharing of information, a decision was made to create an information hub to bring together UK experience of EFMs, and the RYA offered to host the new website pages.

What are they?

Environmentally Friendly Moorings (EFMs), or eco moorings, are mooring systems designed to have less impact on the sea bed than conventional swing moorings. They aim to minimise interaction with the seabed to prevent abrasion and therefore the potential to damage sensitive habitats.

There are no current legislative requirements to use EFMs, although licensing authorities, mooring providers and users are keen to explore the use of this technology further as a potential tool to help reduce impacts from boating activities (replacing conventional moorings and as an alternative to anchoring) on sensitive seabed habitats.

Types and benefits

The new web pages provide a useful resource to explore what EFMs are, the types and manufacturers of them, examples of existing trials and projects, a variety of reports and study documentation, and to provide a means of collating further information as the EFM landscape evolves.



The information has been collated by a range of partners including the National Trust, Natural England, Natural Resources Wales, the Marine Management Organisation, the RYA and The Crown Estate.

Kate Fortnam, The Green Blue Campaign Manager, said:

"Unlike traditional moorings, Environmentally Friendly Mooring systems are designed to avoid making contact with fragile seabed habitats, reducing the potential for damage caused by moving chains and gravity anchors.

"They've become well established in both Australia and the USA, but have been slower to become established for use in the UK, partly due to the large tidal ranges seen in many areas. However, in recent years, various projects have taken place to trial EFMs and they have also been installed successfully by individuals for private use.

"We're always keen to learn more about developing technologies that could help to minimise the impact boating could have on the marine environment. It's essential that we can provide information to allow boaters to make educated choices. That's why we're actively encouraging boaters to share their EFM experiences – visit www.rya.org.uk/go/efms for more information and to take part."

HELISTRAT PARTNERS WITH PREMIER MARINAS TO TACKLE OCEAN PLASTIC WITH 'SEABINS'

Portsmouth based environmental consultancy and contract manager, Helistrat, has installed two Seabins in Premier's Port Solent and Gosport marinas to help tackle marine plastic waste and raise the profile of The Seabin Project.

Seabins are floating rubbish bins, which are located in the water at marinas, docks, yacht clubs and commercial ports. Each bin can collect up to ½ tonne of floating debris per year including microplastics as small as 2mm. A submersible water pump, capable of displacing 25 litres per hour, sucks water in from the surface. This passes through a catch bag inside the Seabin and is then pumped back into the marina leaving litter and debris trapped inside.

The Seabins are emptied twice a day by Helistrat's partner, Premier Marinas, who own and operate nine South Coast marinas including Port Solent and Gosport marinas where the first of Premier's Seabins have been located. On retrieval from the



water the material from the Seabins' catch bags is sorted to extract recyclable materials, including plastics, which are sent to reprocessors. Non-recyclable material is used to offset fossil fuels in the production of energy.

"As a business located near some of the UK's business ports and marinas we wanted to do something to help tackle the global problem of discarded ocean plastic and raise the profile of the innovative The Seabin Project", said Ben Richardson, Trading Director at Helistrat. "The only way we are going to eliminate the 10-12 million tonnes of plastic that ends up in our oceans is by not producing

this waste in the first place, but until then, we need to find ways to help minimise its impact, remedy the damage done and recycle this material."

Graham Bristowe General Manager at Premier's Port Solent and Gosport marinas commented: "Premier Marinas has long been conscious of the importance of running environmentally friendly marinas and we have efficient waste management and recycling systems in place at each of sites. Collecting plastic waste from the water has to date been a question of capturing the waste from a boat. The introduction of Seabins in our marinas is really exciting as we are now able to collect waste more frequently and efficiently. We are proud to be part of this initiative and look forward to incorporating more Seabins into our marinas in the future."

Bianca Carr, Founder of Local campaign group Final Straw Solent comments "we were excited to hear that two Seabins are being installed in the local area. We will be working closely with Helistrat to help raise awareness and encourage businesses to also look at ways to protect our local environment and reduce the amount of plastic being produced".

“
Each bin can collect up to ½ tonne
of floating debris per year

HavenStar

The Ultimate in Marina Management Software

- Single or Multi-site
- On premise or online
- Multi-lingual support
- Full Multi-currency transaction processing and reporting
- Advanced contact relationship management – includes membership
- Berthing efficiency and occupancy reporting
- Deferred revenue and forecast analysis

Options include:

- Synchronisation with MS CRM (on premise or online service)
- Boat Yard Manager Handles all plant and job scheduling
- Integrated Website Bookings
- Integrated EPOs
- Pedestal integration (including Rolec, Meter-MACS, et al)
- Dockside Manager Real time Smartphone or tablet connection



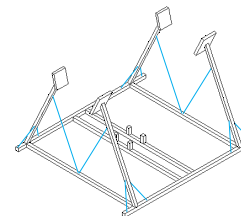
STAR
Call us on: +44 (0)1923 246414
Email: sales@starplc.com or visit our website: www.havenstar.com

BRITISH MARINE
LEADING THE INDUSTRY



We're the UK's leading manufacturer of boat & yacht cradles

Ask us about our extensive award winning range




AWARD WINNING BOAT & YACHT CRADLES



VISIT TENNAMAST.COM | CALL US +44 (0)1505 503824 | EMAIL SALES@TENNAMAST.COM

“ Çeşme Marina introduces The Mussel Project to cut down on aquatic pollution

Announced at the Çeşme Marina Season Opening Party, Turkey’s Çeşme Marina is working in cooperation with the Akua Group and Dokuz Eylül University Institute of Marine Sciences and Technology Department of Marine Technology to help clean seawater through the use of mussels.

Çeşme Marina are increasing the number of mussels living inside the marina’s waters in an attempt to cut down on aquatic pollution and improve the quality of the water. Mussels are known

to filter the water around them when searching for phytoplanktons to eat. Research shows that one mussel can filter 150 litres water per day depending on its type and environmental conditions.

During the first phase of the project, Çeşme Marina secured in strategic locations around the marina, a total of 80 sacks of Mediterranean mussels.

Professor Doctor Gökdeniz Neşer and his team from Dokuz Eylül University will check the ratio of heavy metals inside the mussels regularly and will publish an academic report after one year.



Can Akaltan CMM, General Manager of Çeşme Marina, says: “We are excited to conduct this project and aim to become a model for Turkish and European marina companies. If we can succeed we will recommend this to all marinas. We would like to thank Professor Doctor Gökdeniz Neşer and Cenk Yurttaş for their support and cooperation.”

Akaltan continues, “At Çeşme Marina and working with local partners, we continue to pioneer ecological clean marina solutions with the hope to develop ‘greener marinas’ for the future.”

Along with The Mussel Project, Çeşme Marina continues to pioneer great environmental welfare in the marina with its annual Olive Tree Festival. This eco-friendly family-orientated festival is an opportunity for the olives from Çeşme Marina’s olive trees to be harvested by staff and their families, to create pure and organic olive oil which is sensitively packaged and offered as gifts. The olive oil receives international acclaim with Çeşme Marina having recently been awarded the Green Apple Award, presented at the Houses of Parliament, London in recognition of their sterling efforts to environmental best practice.

Çeşme Marina, a joint investment of Camper & Nicholson’s Marinas and IC Holding, is located in the Çeşme region of Izmir and has a berth capacity of 400 in the marina and 100 on land.



INLAND & COASTAL - UK & IRELAND SEABIN DISTRIBUTORS

Inland & Coastal Marina Systems (ICMS) are the UK and Ireland distributors of Seabin. Come visit us at TheYachtMarket.com Southampton Boat Show from 15th – 23rd September 2018 on the Which Marina stand J0 47 where we will have a sample Seabin which customers can examine to get an understanding of how they work.

Since the launch this year ICMS have supplied Seabins in the following locations;

England – ABP Ipswich, Thames and Kennet Marina, Emsworth Yacht Harbour, Hydrock Bristol, Premier Port Solent, Premier Gosport

Scotland – Banff Harbour, Stornoway Port Authority

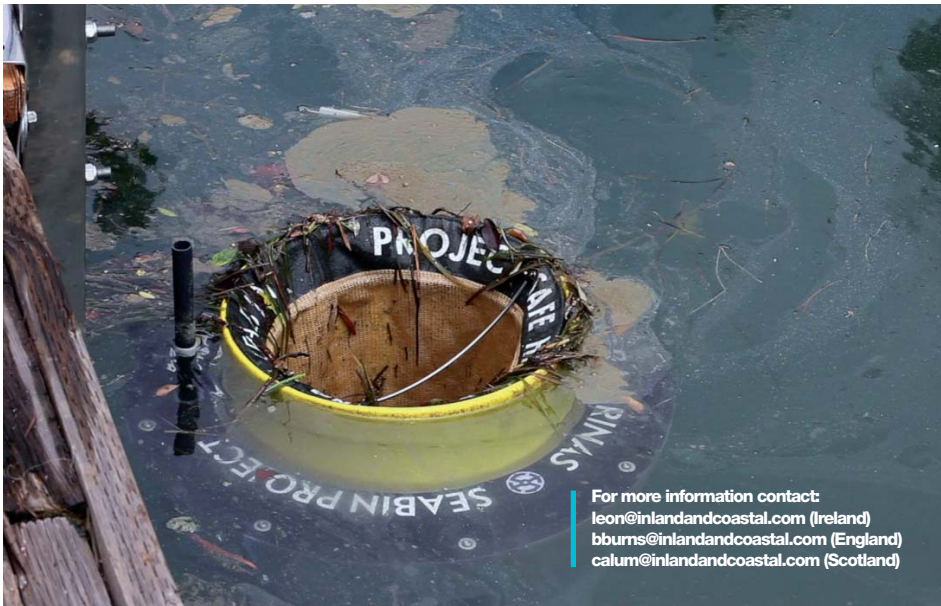
Ireland – Dun Laoghaire

With further orders for Port of Felixstowe, Jersey Marinas and Canary Wharf.

To date all customers have been extremely impressed with the effectiveness of Seabin and the ease with which they can be installed.

The Seabin is manufactured by Poralu Marine.

“
View
Seabin at
TheYachtMarket.com
Southampton
Boat Show
Stand J047



For more information contact:
leon@inlandandcoastal.com (Ireland)
bbums@inlandandcoastal.com (England)
calum@inlandandcoastal.com (Scotland)



High Quality Courtesy Marina Trolleys

Deep sided



Mark 2
Standard: 865x710x150mm
P.O.A.
Deep sided: 865x710x250mm
P.O.A.

All trolleys feature hot-dipped galvanised chassis, short rear leg for use on access ramps, perfectly balanced for easy manoeuvrability, wheels with roller bearings and workmanship guaranteed for 10 years.

Standard



Mark 4
Standard: 1220x635x150mm
P.O.A.
Deep sided: 1220x635x250mm
P.O.A.

LOCK SYSTEM OPTION
P.O.A.

FLAT OPTION
P.O.A. per trolley

AUTOMATIC WHEELS OPTION
P.O.A. per trolley

BRITISH MADE for Quality

Tel: 01283 790320 Visit: www.aceequip.co.uk

TAYLOR FUEL CONTROL

PROVIDING DIESEL AND PETROL FUEL SYSTEMS WITH THE HIGHEST LEVEL OF ENVIRONMENTAL PROTECTION

Over 50 Years of Industry Experience

DESIGN, BUILD AND INSTALLATION
Specialising in bespoke fuelling solutions... Self-contained Fuel Pontoons, Pontoon based Fuel Dispensing Pumps, Land Based Tanks, Monitored Pipework - All easy to use and maintain.



Unit 4 New England Ind Est, Hoddesdon, Herts. EN11 0BZ
www.taylorfuelcontrol.com
Tel: +44 (0) 1992 451101 info@taylorfuelcontrol.com





Affordable Price

The floating home could be the answer to the housing crisis, with the average house in Nottingham costing £194,412 in comparison. In 2018, house prices increased by 4.4% across the country and as BMWL roll out more floating homes they could be part of the housing solution.

BWML also plan to sell these Floating Homes to other operators within the marine and leisure industry who may wish to utilise them as a holiday rental opportunity at sites of their choosing.

the homes are the latest innovation in the market.

Ideal Location

These ethical homes blend into the landscape and the minimalist open plan interior is inspired by their tranquil environment. Set on the river in the private gated area at Sawley Marina, the floating home community is an extremely enjoyable experience that offers a genuine family feeling. In addition, the location provides some of the most scenic views locally and the River Soar and River Derwent are both nearby.

Eco Friendly Living

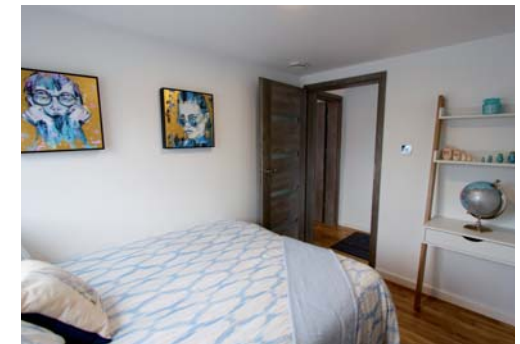
Located in Sawley Marina on the border of Derbyshire, Nottinghamshire and Leicestershire, these homes enrich their natural environment. Truly unique in delivering a very low carbon footprint, low energy bills and a conscientious lifestyle,



INNOVATIVE
AND ECO-FRIENDLY
RESIDENTIAL
FLOATING HOMES
TO DEBUT AT
SAWLEY MARINA
NOTTINGHAM

Available on the market from June 2018, BWML can provide buyers with an alternative low-cost living solution. Based in Nottinghamshire, BWML have just launched their brand new floating homes. Built with the latest technology and constructed to enhance their calm surroundings, these new houses offer an innovative space for buyers.

Rod Grant Head of Retail BWML explains: "Designed and built to last a century, our new floating homes provide owners with a unique twenty-first century living space with underfloor heating, fully fitted kitchen, two bathrooms, two double bedrooms and an outside deck for entertaining, and start at the reasonable price of £169,950."



“
View the full specification at www.bwml.co.uk and then drop a line to the sales agents at www.townsandcrawford.co.uk

TOM LORD AWARDED CMM

With a background in leisure management in the UK I was privileged to join the fantastic Limassol Marina project in Cyprus in 2013, during its construction, to prepare for opening and operation. As the first superyacht marina in the country, we are successfully establishing Limassol as a leading yachting destination, and with good reason!

“
**Limassol
 SuperYacht
 Marina Manager
 is new Recipient
 of CMM
 Certification**

Now responsible for the Marina operation at the large-scale integrated project, I lead a fantastic and dedicated team striving to deliver the very best marina experience to our customers.

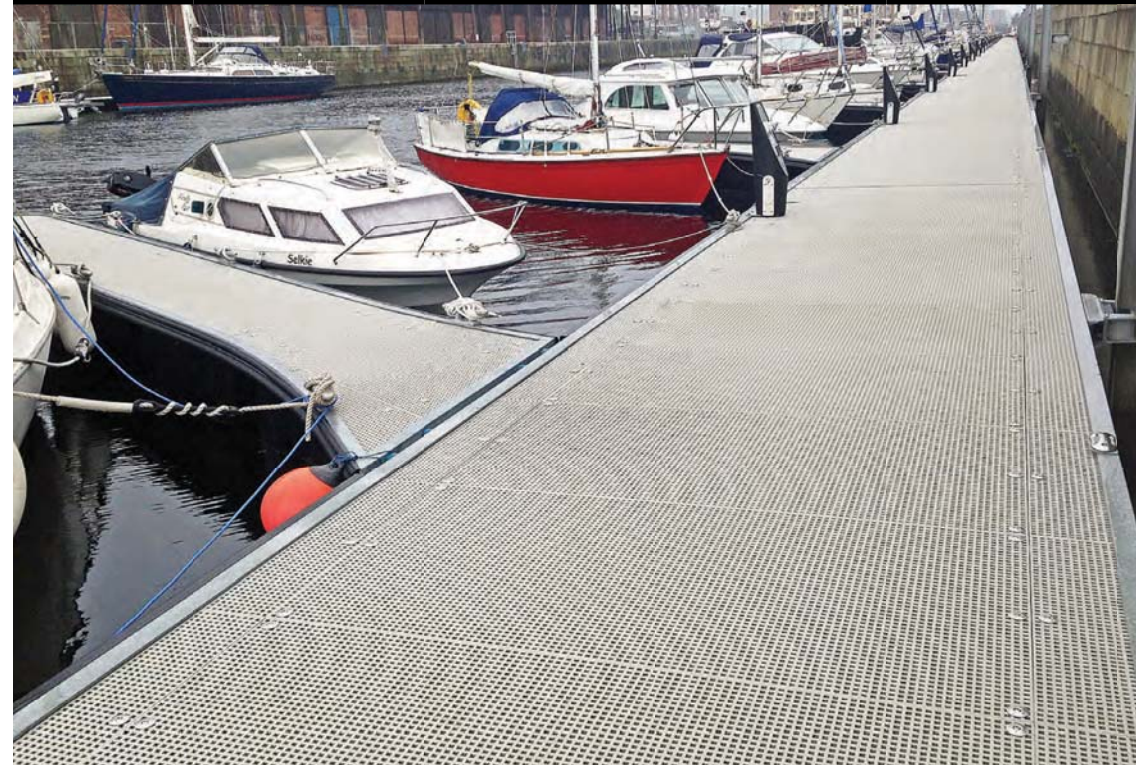
I am honoured to receive the CMM certification and join the network of industry-leading colleagues around the world.

Dates for your Diary

- 19 September 2018 – UK & Europe GMI Meeting (for CMMs and CMPs)
- 8 – 11 October 2018 – Intermediate Marina Managers Course / Venice, Italy
- 20 – 25 October 2018 – Advanced Marina Management School / Athens, Greece
- 9 – 12 December 2018 – Intermediate Marina Managers Course / Dubai, UAE



Fibreglass Marina Decking



Marina Deck has one of the highest degrees of slip-resistance ever measured

Applications:

Pontoons
 Entrance gangways
 Fingers
 Mooring pontoons
 Jetties
 Piers
 Fuelling areas
 Brows

Benefits:

Low maintenance
 Anti-slip surface
 Long lifespan
 8mm or 12mm square mesh
 Pet friendly
 Simple to install
 Minimal maintenance
 50 year+ lifespan

Dura Composites Ltd
 Dura House, Telford Road,
 Clacton-on-Sea,
 Essex CO15 4LP
 United Kingdom

Tel: +44 (0)1255 423601
 Fax: +44 (0)1255 435426
 info@dura.composites.com

www.dura.composites.com/marinadeck

Marina Deck

duraTM
 composites

Industrial Rail Marine Landscaping Architectural



OVERWATER MARINA



Located on the Shropshire Union Canal between Nantwich and Audlem lies Overwater Marina which is owned and operated by the Maughan family who also farm the surrounding

farmland. The marina has matured over the last 7 years and has benefitted from continual attention and planting together with the grounds being maintained. Recent developments include the establishment of a 10-pitch caravan/ motorhome site and provision establishing a small holiday lodge site.

Janet and her team run an excellent marina and she says, "We are delighted to be awarded five gold anchors and must place the credit with our great team of staff at Overwater".



POOLE QUAY BOAT HAVEN

Poole Quay Boat Haven and Port Poole Marina are both perfectly positioned to offer a base from which to explore Pool Harbour and its surrounding area. Marina Manager, Kerrie Gray commented on their award, "We were delighted to learn that after a meticulous review process we have once again been awarded a 5 Gold Anchor status by the



Yacht Harbour Association (TYHA). I am immensely proud of my team, this prestigious award is a credit to their continued commitment and hard work they show every day".



MAYFLOWER MARINA

Mayflower Marina, was recently awarded UK Coastal Marina of Distinction and a Devon Gold Tourism Award. With excellent customer service which is fostered through an active Berth Holders' Association and the medium of the RYA Active marina ethos, the marina has also been awarded 5 Gold Anchors.

Marina Manager, Charles Bush says of their award, "We are delighted to learn that after an exhaustive assessment process, Mayflower Marina has retained its 5 Gold Anchor status. In an increasingly competitive market it is hugely reassuring to receive independent verification that we have once again achieved the gold standard for our facilities and our customer service.

Our staff should be very proud. To be ranked amongst the very best is hugely to their credit and without their efforts, in fair weather and foul, year in, year out, we would achieve very little!

"I am very pleased to confirm that the marina and the team of professionals that run it have achieved our highest accreditation level of 5 Gold Anchors. The Gold Anchor scheme utilises expert assessors to evaluate marinas against an exacting standard which considers all operational, facility and customer service aspects of running a modern marina. The assessment also gains feedback directly from customers and utilises a mystery shop process to gain valuable insights into the customers experience delivered. My congratulations to the Mayflower Marina team for this excellent achievement and for providing such a high quality experience for their customers."



SUTTON HARBOUR MARINA



The Marina at Sutton Harbour, Plymouth, has been awarded Five Gold Anchors following a recent assessment by the Yacht Harbour Association under the Global Marina Accreditation Gold

Anchor Award Scheme. Considerable recent investment in this sheltered but accessible site has been made, complementing its unique position within the heritage area of Plymouth's Barbican, which offers customers immediate and convenient access to a wide range of tourist and visitor amenities. Overall the marina service and facilities have been very well reported on in customer surveys.



PLYMOUTH YACHT HAVEN

Plymouth Yacht Haven lies in the shelter of the Mount Batten Peninsula and just minutes from the open water of Plymouth Sound. This delightful marina has retained their 5 Gold Anchor award for another 3 years. Steve Kitchen Marina Manager, says of the award, "We are all thrilled to receive once again the accolade of 5 Gold Anchors. This award recognises the commitment and determination of the entire Plymouth Yacht Haven team, who work tirelessly 365 days a year in all conditions to give our berth holders and visitors the best marina experience possible."



LYMINGTON YACHT HAVEN



Another marina in the Yacht Havens group has also retained their 5 gold anchors. Situated in an enviable location overlooking the saltmarshes and the western

Solent, this is a wonderful place to enjoy the outdoors with a range of activities on offer. Marina Manager Rupert Wagstaff says of the marina's achievement "On behalf of the entire team at Lynton Yacht Haven we're delighted and honoured to receive this award. We are a 24/7 marina operation welcoming thousands of boaters each year so every member of the team must be passionate about delivering a 5 star experience at all times and we believe this is reflected in the genuinely friendly and helpful team we have at the marina, we're humbled to have received this accolade for the third time in a row."

FOR MORE
 INFORMATION ON THE
 GOLD ANCHOR SCHEME
 CONTACT LIBBY OR GO
 TO OUR WEBSTE
 WWW.TYHA.CO.UK



GOLD ANCHOR
 Global Marina Accreditation

VIEW TOP BRANDS AT PREMIER'S SWANWICK USED BOAT SHOW

Back for its 39th consecutive year, Premier Marinas gets set for two shows as it hosts its annual Used Boat Show at Swanwick Marina - running it concurrently with TheYachtMarket.com Southampton Boat Show, 14th - 23rd September 2018.

The Used Boat Show will feature extensive on and off water displays of power and sail boats from onsite brokerages, Ancasta International Boat Sales, Clipper Marine, Princess Motor Yachts, Sea Ventures and Sunseeker Southampton.

“
Open daily from 10am - 6pm, visitors will have the opportunity to peruse an extensive line-up of quality pre-owned boats

Visit www.premiermarinas.com or for more event details please call Barbara Liddell on 01489 885000 or email barbaral@premiermarinas.com

Martin Bowman, Marina Manager at Swanwick Marina said: “Swanwick Marina has become a popular destination for purchasing and selling a wide range of vessels. From power boats to sailing yachts and RIBs, Swanwick has it all. We always look forward to hosting the September Used Boat Show. We’re perfectly placed for visitors to browse an extensive line-up of boats from our first class brokerages.” So whether you're thinking of selling or buying a used yacht or motor boat, this show is one of the most established and successful used boat shows on the South Coast.



EZ Dock Pontoon

EZ Dock’s floating, modular, composite docks and accessories offer unbeatable adaptability, exceptional performance in rough water, superior strength and durability. The modular pontoon system provides safe access for any age or ability. EZ Dock offers a range of customisation options allowing you to add walkways, docks, PWC docks and other features you need. As your space grows, our docks grow with you.

- + Flexible Floatation Technology
- + Adaptable Design
- + Universal Accessibility
- + Easily Customisable
- + Low Maintenance
- + Self-Floating
- + Environmentally Friendly

+44 (0)1283 208891 | www.pontoonanddock.com | sales@pontoonanddock.com





Meter Maid™

Portable Electricity Meter

The best in ship to shore in-line metered leads
Designed and manufactured in the UK 

- Tried and tested in marinas around the world over 20 years
- Reliable, rugged, waterproof
- 200-260V and 100-130V
- Comprehensive 2 year warranty
- Class 1 accuracy
- Reliable, rugged, waterproof
- 16A or 32A capacity
- Cable length to suit you
- An ISO 9001 company

Available throughout Europe, USA and Canada from selected agents, or direct from:-



85 Cavendish St., Ipswich IP3 8AX, UK
TEL: +44 (0) 1473 215777
FAX: +44 (0) 1473 214060
 Email: sales@microcustom.co.uk
www.microcustom.co.uk



WINNER
 Pedestals/Pump-Out
 Systems
 MARINA

World Class Design, Manufacture & Installation

MARICER
 World Class Design, Manufacture & Installation

Maricer (CPES Ltd)
 Vale Industrial Estate, Spilsby,
 Lincolnshire PE23 5HE
 United Kingdom

www.maricer.com sales@maricer.com +44 (0) 1790 753164



WISE

Base Marine
Making a WISE choice



This 16 Wheeled Monster is equipped with our renowned multi-mode steering system. So while it may be a big machine, it can still maneuver in the tightest of spaces.

Tel: +44 (0)1535 272033 www.wisehandling.com sales@wisehandling.com

THE MARINA & BOATYARD OPERATIVE APPRENTICESHIP STANDARD MOVES ONE STEP CLOSER TO DELIVERY

An employer group comprising a mix of marina and boatyard employers has been developing a new Marina and Boatyard Operative Apprenticeship Standard, in line with government apprenticeship reforms.

The Standard, detailing the knowledge, understanding, skills and behaviours required by a competent Marina and Boatyard Operative, has undergone extensive review within the industry and by the Institute of Apprenticeships (IfA) review panels, and is now published on the Institute for Apprenticeships (IfA) website.

The End Point Assessment (EPA) Plan detailing the assessment that apprentices must successfully complete during the last 3 to 4 months of their Marina and Boatyard Operative Apprenticeship Standard has been submitted to the IfA for review. The employer group is now awaiting the IfA's feedback and publication of the EPA Plan along with a decision as to what government funding will be available to employers to support the off the job training and development of an apprentice. Once this has been obtained and published marina



and boatyard employers can offer the apprenticeship to new and existing staff (certain conditions apply for existing staff) to grow their own talent and enhance the skills of their workforce.

The funding band allocated to the Apprenticeship Standard will determine the maximum Apprenticeship Levy (paid by UK employers whose annual wage bill is in excess of £3 million) that can be used for the training and development per apprentice by English marinas and boatyards, and for those English employers who do not pay the levy, the maximum co-investment funding the government will pay per Marina and Boatyard Operative

To find out more about the new Marina and Boatyard Operative Apprenticeship Standard or the benefits in employing an apprentice please contact Chris at cholmes@britishmarine.co.uk

apprentice. Under the co-investment funding model the government fund 90% of an apprentice's off the job training and assessment and the employer 10% up to the funding band maximum.

The Chair of the Employer Group, Jon Eads CMM of Salterns Marina Ltd said

"The project commenced in earnest following a meeting at the 2017 London Boat Show and has taken a huge amount of time and effort from the Employer Group for which I'm immensely grateful. I also have to mention Chris Holmes, Training Executive at British Marine, as without her help, none of this would be possible. We now have a fantastic opportunity for marina and boatyard employers both large and small, to really benefit from what will be a truly comprehensive apprenticeship that will be of immense value to employers and apprentices alike. The main thing now is to register your interest by contacting Chris at the British Marine in order for us to get the first wave of new apprentices ready to start by the beginning of 2019. This is a training and staff development opportunity not to be missed!"



Roodberg

Roodberg offers a complete range of boat handling equipment including **Power Hoists, Boat Movers, Slipway Trailers, Cranes and Boat Storage.**

With over 30 years' experience designing and building, Roodberg can supply you with the very best in boat handling equipment. They have been designed to safely transport boats of various sizes and weights to and from the water with ease.

- + Capacity From 5 - 1000 Ton
- + Quality Components
- + Saves Time & Money
- + Over 30 Years' Experience
- + Low Maintenance
- + User Friendly
- + Low Usage Costs

HARBOUR ASSIST TAKES TECHNOLOGY SOLUTIONS WORLDWIDE

Harbour Assist is an innovative Cloud-based software system that streamlines the management of harbour and marina businesses. In 2017, the Cornwall based company made a strategic decision to expand internationally.

Co-founder of Harbour Assist, Nick Gill explains, 'We established that in order to both grow and provide the same level of continuous improvement and support to existing clients, we had to expand.' And that expansion has seen investment in customer support, online training and continuous system development.

These are just some of the reasons why Harbour Assist is proving so successful on the international stage, with operators from the Middle East to the Caribbean quick to recognise the benefits it can bring to them.

By early 2018, Harbour Assist had secured three contracts in the United Arab Emirates.

For ART Marine, the largest marina management company in the Middle East, choosing Harbour Assist for use in their Marasi and Al Bandar marinas was more strategic than operational. 'As a management company we always look to prioritise the needs of our property owners,' said Toby Haws, Head of Marinas, 'and in the fast depreciating world of IT that translates as asset-light. As a Cloud-based system there was no infrastructure requirement, and we in fact reduced our operating cost and offsite back up storage requirements.'

By using Cloud-based systems, Harbour Assist means that no on-site servers are required, that capacity is infinite, and that the whole suite of services can be accessed from anywhere - all you need is a device with an Internet connection. Not only does Harbour Assist enable operators to access complete customer management information, it also allows customers to log in and view their own accounts.

Bvlgari Yacht Club & Marina chose Harbour Assist because of its user-friendly appeal. Commented Oliver Rees, Director of Yacht Club & Marina at Bvlgari Resort & Residences Dubai, 'In the middle east we are very multi-cultural with different levels of understanding throughout the manning, and we needed a system that works for all. I have worked with many different types of management software in the



region which are restricted for use just for management because of their complexity.

Harbour Assist breaks that mould so the whole team can use it. We're extremely happy with the software and it is now an integral part of our operation which helps to make us a five-star marina.'

Before embarking on international markets, Harbour Assist has been rigorously tested out at marinas and harbours across the UK, and it is used across 60 sites.

Added Nick Gill, 'It's quite fitting in a way how our growth has come organically, as this is how we always envisage Harbour Assist as a management system. As both an operating system and a product, it is designed to organically develop to suit the needs of the user through continuous user feedback which

we develop into quarterly system updates. This is possible due to our Microsoft Cloud-based platform, removing all need for physical set-up visitation and training costs, additional back-up systems or server room - perfect for the modern lean operation that wants to keep as little IT risk onsite as possible.'

Harbour Assist's growing international client base clearly shows they have caught the wave at just the right time, by providing technological support to enable harbour and marina operators to expand their businesses by being able to devote more time to that instead of having to wade through a growing administrative burden.

To find out how Harbour Assist can help your business, visit www.harbourassist.com or call us on 01208 590616, or email: info@harbourassist.com



HARBOUR ASSIST TAKES CLOUD-BASED SOLUTIONS TO THE CARIBBEAN



'In addition, we really liked the way Harbour Assist will work across all our different departments, consolidating customer relations, accounting and debt chasing procedures into one system. We are looking forward to working with this up and coming software company over the coming years.'

Resilience, especially in view of extreme weather conditions; flexibility and the ability for the system to be accessed from anywhere; its ability to work across all parts of the business, from accounts to customer services; and the extensive suite of training that accompanies it combine to make Harbour Assist an attractive system for harbour and marina operators.

'We designed Harbour Assist to be a user-friendly solution for marinas and harbours alike,' explained Nick Gill, Commercial Director at Harbour Assist. 'Always working with our clients to improve the system means that it is effectively designed by the industry, for the industry. If it's not a complete system that is easy to use, then there's no point having it!'

System failure is one of the biggest concerns in running a modern harbour or marina. In the British Virgin Islands that came into the sharpest focus after the catastrophic hurricanes of 2017. 'After the devastating hurricane season of 2017, we decided to make a policy change to our mission critical systems,' explained Adrian Sinton, IT manager from Nanny Cay Marina in Tortola, BVI. 'We decided to switch to a true cloud/browser-based system, and ultimately picked Harbour Assist for our Marina, Boatyard and Hotel management system.'

Drawing on its experience implementing remote installation of operating systems, training and set-up from its three marinas in the UAE, without stepping foot on an aircraft, placed Harbour Assist in good stead, allowing Nanny Cay to instantly receive

the same benefits and services all Harbour Assist's UK marinas get.

'Having our system hosted elsewhere was not the only consideration, but an important one, not only to remove the mission critical hardware from harm's way but to reduce overall IT infrastructure requirements, required maintenance and support,' continued Adrian. 'Furthermore, Harbour Assist, as a browser-based system will run on just about any device, from anywhere in the world. We no longer need to run Windows domain servers and services, and all licensing requirements associated with that are out the window... to my great relief.'

“
**Nanny Cay Marina in Tortola - BVI
 switch to cloud/browser based system**”

HARBOUR ASSIST



A new generation of harbour and marina management software.



Whether you're managing the largest international harbour, or an independent family-run marina, keeping a tight ship is critical.

- Secure "Cloud" based solution, accessed from any location, on any device.
- Integrated CRM, every customer, all of their contact and boat info, preferences & history.
- Bulk invoicing, Contract renewals, emailing, letters, SMS and e-marketing.
- Full operational and financial reporting.
- Instant "Live" view of Customers, including their Vessels, Contracts, Renewals, Payments and Communications.
- PCI Compliant Mobile and Online payments.
- Location/Asset Management, Maintenance scheduling and logging, Task Management and Resource scheduling.
- Smart Meter Electricity & Water integration.
- Military-Grade Hosting; ISO 27001:2005 Audited and Certified & PCI Level 1 Certified.
- Data is 100% safe and 100% protected.
- GDPR (EU General Data Protection Regulation) compliant

www.harbourassist.com | info@harbourassist.com | 01208 590616



PayPal Partner

HARBOUR ASSIST

ICOMIA WORLD MARINAS CONFERENCE 2018

The much anticipated ICOMIA World Marinas Conference (IWMC), to be held 25 - 27 October 2018 in Athens, Greece, promises to deliver an innovative programme of topics, speakers and events under the theme: "Cross Sea Challenge for Marinas - Setting the Scene for Collective Development and Growth".

Presented by ICOMIA, organised by the ICOMIA Marinas Group and hosted by the Greek Marinas Association, IWMC 2018 is expected to draw over 300 delegates to the three-day event, consisting of two conference days and a day touring the best marinas Athens has to offer.

Conference Highlights include:

- Latest International Marina Statistics: ICOMIA will present its latest statistics and policy papers and explore global issues affecting marinas – such as new international guidelines for marina design and ISO regulations for ports.
- Marina Markets of the World: Delegates will receive detailed reviews of the marina markets of the world, with an emphasis on America, Asia, Australia, the Mediterranean, MENA and Russian markets. There will also be a special focus on Greece – which is fast-becoming the

destination of choice for the coveted millennial boater looking for adventure.

- Trends, Development and Growth: Dr. Donald Sadoway Professor of Materials Chemistry, MIT, will speak on harnessing energy efficiently and there will be international experience sharing on a variety of topics, looking towards the future of the industry

- Marina Marketing: Discussion with a panel of experts, moderated by Jean-Michel Gagné CMM from the Global Marinas Institute

- Marina Tours: Day two of the conference will include a whole day tour at some of the most beautiful marinas in Athens. Experts from the county's marina sector will showcase current major waterfront and marina projects and explain the Greek concession model.

- Fascinating keynote speeches from John Kalogerakis, CEO, JMK Anthropocentric Corporate Training and People Development, on "Training Marinas the Anthropocentric Way" and Theodosios Tassios, Professor of the National Technical University of Athens, on "Navigating Through History"

There will also be speakers presenting their expertise on electric boat propulsion, solar piers, floating infrastructures and drystack new technology. Plus, delegates will learn about security issues at ports and marinas, oil pollution crisis management. Other hot topics in the programme include the international growth of superyacht charter as well as managing change in boating and ownership.

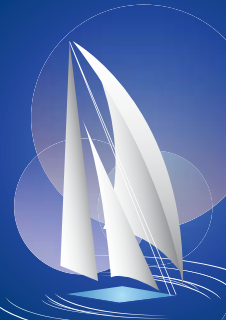
IWMC 2018 will include plenty of opportunities for networking. With many of the key players in the international marina industry attending, the IWMC 2018 is the place to see and be seen, and to develop important business relationships.

Register Now

ICOMIA World Marinas Conference 2018 will be held 25-27 October in Athens, Greece. For more information, including a full agenda and to register to attend, go to www.worldmarinasconference.com. All ICOMIA members can take advantage of a special price of 450 euros. To register for the discount, email Stavroula.Kakaletri@greek-marinas.gr.



ICOMIA 25-27 OCTOBER 2018 | ATHENS
WORLD MARINAS
Conference 2018



REGISTER TODAY!
www.worldmarinasconference.com

Noted speakers include:



Oscar Siches

Yacht Harbor Expert, former Founder Director of the Global Marina Institute, Spain

"The ICOMIA World Marinas Conference allows current and future marina operators to directly interact with the most experienced experts and fellow marina operators and developers. It is a golden opportunity to be immersed for three days in our fascinating and complicated industry"



John Hogan

Chairman, Global Marina Institute and CEO, Superior Jetties, Australia

"The World Marinas Conference is an opportunity to meet the leaders of the international industry in one place. It is always an eye opener and with new technology in boating we are seeing improved berthing solutions as well. All of the top suppliers are there as well, and the relationships that are built will stand you in good stead into the future."

Topics to be discussed include:

MARINA MARKETS OF THE WORLD: AN UPDATE

- North America
- Latin America
- Asia
- Australia
- Mediterranean
- MENA
- Russia

MOVING TOWARDS DEVELOPMENT AND GROWTH

- Greece on the spotlight: Investment opportunities for foreign investors
- Sharing experience from abroad: Key consideration for successful marinas development

Presented by: ICOMIA

Hosted by: GREEK MARINAS ASSOCIATION

Organised by: MARINAS GROUP

Under the auspices of: HELLENIC REPUBLIC MINISTRY OF TOURISM, HELLENIC REPUBLIC MINISTRY OF MARITIME AFFAIRS & INLAND POLICY, GREECE, HELLENIC CHAMBER OF SHIPPING

Lead sponsors: D Marina, LAMDA, boot

Main sponsor: ALPHA BANK

Conference sponsors: A1, BWA, Coca-Cola, Dineffo, ENIV, PUBLIC PROPERTIES COMPANY

Exclusive International Marina Media Partner: Marina

Communication sponsors: KATHIMERINI, ONDECK

Other logos: Action, ENTERPRISE GREECE INVEST & TRADE, SETE, hazlis & rivas

BESPOKE FLOATING BREAKWATER



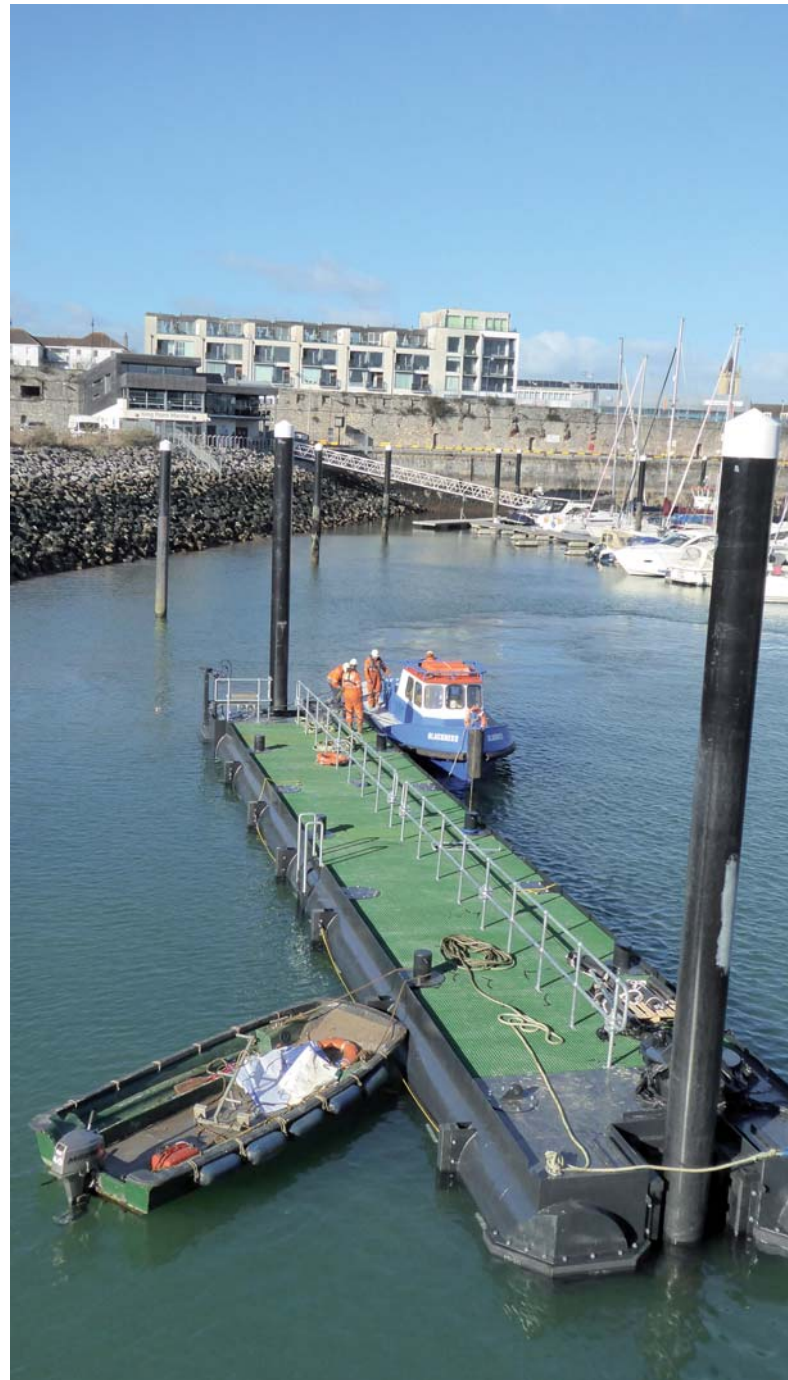
Like many marinas and harbours, Kings Point Marina in Plymouth, UK, is occasionally exposed to storms from a specific direction which results in large wave climates propagating into the marina. These large waves risk not only damage to pontoons and yachts but in this case also localised flooding caused by wave run-up at the rear of the harbour.

Providing fixed breakwaters or screens are often a prohibitively expensive solution for shielding a marina to storm events with a low probability of occurrence. Such solutions may also impede safe navigation during the normal operations of the marina. A key requirement for a deployable breakwater solution is that it should be able to be deployed quickly in response to

an inclement weather forecast and also be removed in a timely manner as to not restrict the normal operations of the marina.

King's Point is an historic harbour which previously included lock gates within the narrow entranceway to maintain the water level within the harbour. Whilst lock gates may have seemed to be an obvious choice to defend the marina by fully reflecting the incident waves, such gates are subject to high cyclic forces acting on the structure and create both engineering and maintenance challenges. An alternative design was required for an economical yet robust solution.

At Beckett Rankine, we studied the site, the requirements, alternative solutions and proposed a floating breakwater. We proved the concept and completed the detailed design on behalf of Land and Water.



The key challenges;

- Proving that the floating breakwater would provide sufficient wave attenuation properties.
- Developing a method of quick, easy and safe deployment.
- Ensuring the pontoon and fixtures are capable of withstanding the survival wave condition.
- Designing for cost effective fabrication.

In order to prove to both the Marina Operator and the Environment Agency that a floating breakwater would sufficiently absorb or reflect enough wave energy to meet the requirements of the site, Beckett Rankine conducted both analytical and physical models of the entrance way and pontoon. The physical model (tank testing in a flume) also provided validation of the anticipated forces being absorbed by the pontoon.

Piles were installed to restrain the pontoon whilst not restricting the navigable width of the entranceway. The floating breakwater is moved from a storage position to the harbour

entrance using a typical workboat. The pontoon is located end-on into the first pile and swung around the pile to close the entranceway. The pontoon was designed with a mechanically operated hinged pontoon end which allows the pontoon lock into place. The hinge is rotated by a geared mechanism and rigid pins are fixed down to lock the hinged end in place.

The pontoon itself is a deep skirted steel tubular design which allows the wave energy to be absorbed through fendered pile connections and reflected back out to sea. A detailed 3D model of the structure was created to allow discussion on improving the solution during the design stage and to aid the fabricator with CNC cut steel and assembly.

Beckett Rankine are a leading independent maritime design consultancy, covering all stages of a project from structural inspections and asset management to detailed design and installation of marinas, ports and harbours.

For more information contact
Ian Dobson, Associate Director
Ian.Dobson@beckett-rankine.com

WALCON MARINE

Walcon Marine Ltd, the international market leader in the design, manufacture and installation of berthing facilities, marinas and yacht harbours, has acquired Docking Solutions Ltd, the Devon-based supplier of heavy-duty pontoons and commercial-grade bridges, from its parent company Baltic Wharf Ltd.

“We are very pleased that Colin Bower and the Docking Solutions product range have joined Walcon Marine,” said James Walters, managing director of Walcon Marine. “The heavy-duty pontoons designed and produced by Docking Solutions extend our product range and allow us to offer more cost-effective solutions to the commercial and governmental



“
Acquires Docking Solutions Ltd from its parent company Baltic Wharf Ltd



sectors, as well as sturdy alternatives for providers of leisure berthing facilities with locations that are exposed or in high-traffic positions. We look forward to introducing our client base to these high quality, long-lasting products as part of an enhanced Walcon offering.” Colin Bower, managing director of Docking Solutions, added, “Over the past 25 years we have sold our pontoons to a wide range of satisfied customers. Becoming part of Walcon marks the start of a new era for the brand and we anticipate that Docking Solutions’ bridges and pontoons will reach new markets and become an even more common sight in harbours around the UK and abroad.”

Docking Solutions pontoons use twin tubular steel floats braced by welded cross tubes for exceptional strength and durability, mounted in a catamaran configuration. They can be fabricated to almost any length and size, and in high-freeboard configurations. Existing customers include harbour and port authorities, search and rescue services and the MoD, as well as marinas serving leisure users.

For more information about Walcon Marine visit www.walconmarine.com

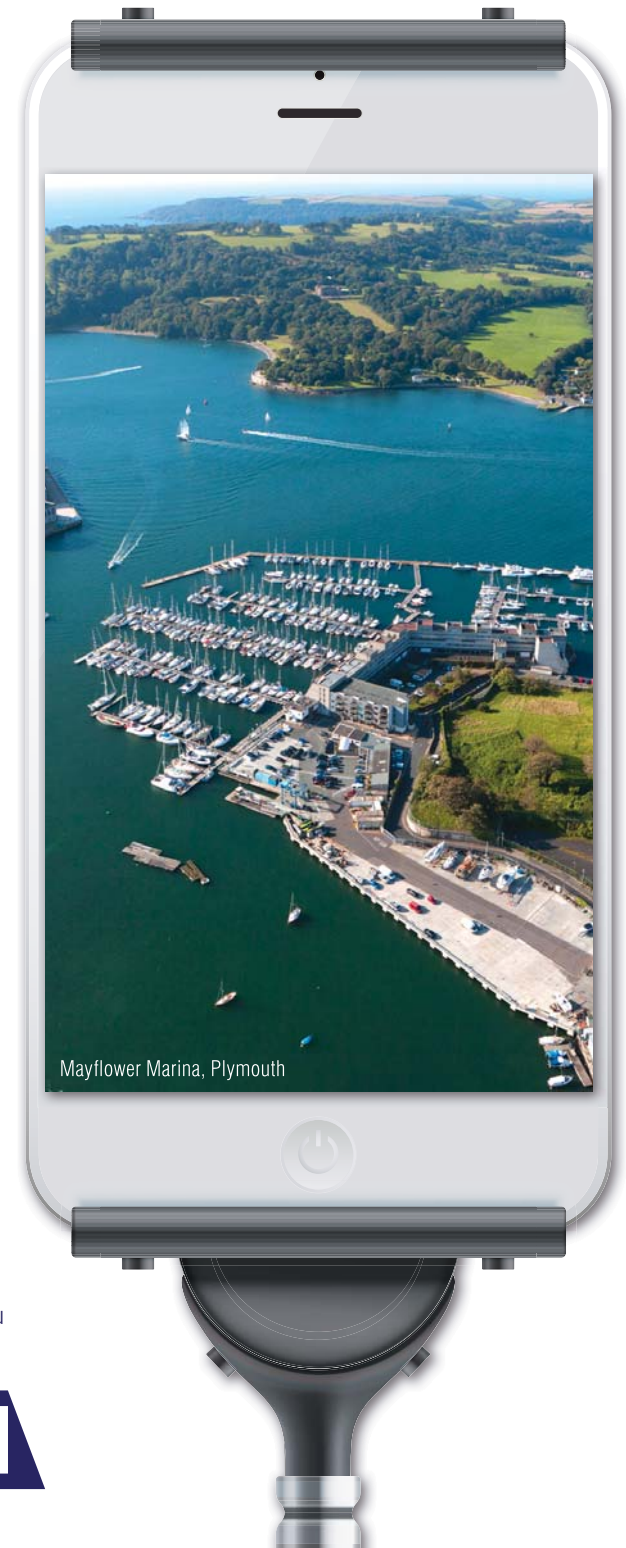
ANOTHER SUCCESSFUL YACHT HARBOUR BUILT BY WALCON...

Walcon Marine Ltd (Head Office)
Cockerell Close, Segensworth West,
Fareham, Hampshire PO15 5SR
T: +44 (0) 1489 579977
F: +44 (0) 1489 579988
E: sales@walconmarine.com
www.walconmarine.com

Walcon Marine Benelux
T: +31 (0) 38 385 9559
E: info@walconmarinebenelux.com
www.walconmarinebenelux.com

Walcon Marine Italia
T: +39 (0) 33 562 22461
E: info@walconmarineitalia.com
www.walconmarineitalia.com

Walcon Marine Australia Pty Ltd
T: +61 (0) 8 9583 3982
E: enquiries@walconmarineaustralia.com.au
www.walconmarineaustralia.com.au



WALCON

- SERVICE PEDESTALS
- SANITATION PUMP-OUTS
- EMERGENCY SERVICES
- ELECTRIC VEHICLE CHARGING
- LIGHTING
- PRE-PAYMENT SYSTEMS
- SMART METERING
- ELECTRICAL DISTRIBUTION
- ACCESSORIES
- INSTALLATION
- TESTING & INSPECTION

Marina Solutions

by **ROLEC**
Global Marina Services

THE WORLD'S LEADING SPECIALIST

Serving the Marina Industry since 1990



Over 25 Years' Experience



Manufactured in the UK



SMART Integration



LED Amenity Lighting



Internal Electric & Water Segregation



Bespoke Manufacturing



CE Certified

t: +44 (0) 1205 724754
e: rolec@rolecserv.co.uk

[@RolecMarina](https://twitter.com/RolecMarina)
www.rolecserv.com