

# Fore<sup>and</sup>Aft

M A G A Z I N E



T H E   Y A C H T   H A R B O U R   A S S O C I A T I O N

---

**Pretty in  
Pink at  
Fambridge**

---

**Which Marina  
Book Your  
Stand Space**



---

**Dura Composite  
Scoops 2017  
Queen's Award**

---

**Gold  
Anchor  
Marinas**

DECEMBER 2017



The Intelligent Pontoon System  
Brought To You By...

**SOLENT MARINE LTD**



#### **SIMBRO Pontoon System:**

- Mooring fingers and pontoons located at 125mm intervals to allow any orientation and layout.
- The new pile brackets can be positioned at 50mm intervals
- Facility for mooring cleats every 180mm.
- Unique aluminium bearer design supports the deck and is completely protected by neoprene rubber to isolate galvanic corrosion.
- Large top entry service ducts provided on both sides of the walkways to allow easy provision of services to the berthing areas.
- Triangular plastic splays with rubber buttons for anti-slip properties.
- Plastic finger ends
- Specially designed and developed glass fibre reinforced concrete floats providing an exceptional buoyancy level of upto  $2.5\text{kn/m}^2$  - higher than recommended standards.



**Tel: +44 (0) 2392 466666**  
**[www.solentmarine.com](http://www.solentmarine.com)**

## In FOCUS

SIMON HAIGH - TYHA CHAIRMAN

It falls to me to, your Chairman, to scribe this edition of 'In Focus' as Jon White, our dedicated TYHA General Manager has fallen off his mountain bike whilst careering down a Welsh mountainside and broken his elbow. He really should know better at his age - get better soon Jon!

The past few months have seen most marinas maintaining reasonable levels of business despite economic and political uncertainties, and the ongoing stream of bad news which seems to be constantly fed to us all from around the world. From Brexit and wayward MP's, Sterling slump to Trump, we could all do with a break! Probably the most apparent effect to British marinas now is the steady stream of higher value and good quality brokerage boats which are being sold into neighbouring European countries due to the weakness of the pound; this is potential good news however for some of our northern European members. These boats are clearly not being replaced and are making a long-term dent in the UK boat stock, exacerbating the flat line or even decreasing boat population, which we are all competing for as our main customer base. But, times are a changing, and there is much talk about how boat ownership and participation

will look in the future.

These changing times are recognised by all of us in the marina industry and it is very reassuring that British Marine are investing considerable resource in their 'Futures Project' which is an ongoing study to understand the changing nature of the marine market. Jon White has been closely involved with British Marine in the preliminary scoping and work, and more recently consultants have been commissioned to consider four main areas which are specific to our industry, mainly; social context, statistics, emerging themes, benchmarking and recommendations. Similar studies are also being conducted in a number of other countries with developed boating markets where similar concerns about the future exist. TYHA will continue to contribute to the British Marine Futures and other studies to ensure we can provide the best guidance possible to our members on the ever changing leisure boating market.

Mother nature plays her part in reminding us how fragile our marina businesses can be, and we were very sad and concerned at the devastation which a series of extreme Hurricanes caused in the Caribbean this autumn. As well as heart breaking human suffering, many boats and marinas were

completely wrecked, and we had to wait for news of TYHA member IGY Marinas and their staff as it became clear that a number of their facilities had been severely hit. Kenny Jones and his IGY team worked tirelessly in the aftermath of the Hurricanes to ensure peoples' safety and welfare, and then to clear the immediate carnage, and work towards planned reinstatement of facilities and their marina business. Thankfully no IGY staff lives were lost, but many homes and possessions had gone. Since the disaster, IGY have made remarkable progress, and as well as dealing with their own people, property and business they have contributed massively to wider community aid and support. We take our hats off to Kenny and his team for the way they have dealt with the immense challenges they have faced and wish them every success for the future.

Following a very successful TheYachtmarket.com Southampton Boat Show we now look ahead to boat shows, networking events, a new website and ongoing opportunities to support our TYHA members in 2018.

And finally, I would like to take a rare opportunity thank Libby and Jon and for all their ongoing hard work and commitment in supporting the TYHA Membership and to congratulate them on the steady improvements and progress which is being made.



# 50 BEDS ONBOARD & MDL MARINAS ANNOUNCE NEW PARTNERSHIP



## 22 THE AUDLEM LASS



## 30 LIMMASOL MARINA FINAL PHASE NOW COMPLETED



## 66 SEALS RETURN TO THE SOLENT



# CONTENTS

London Boat Show - What's New?	06
The Green Blue	08
Downsize your Boat - Not your Lifestyle	10
Apprenticeship Standards	12
New TYHA Members	14
World Marinas Conference	16
National Award for Troon	18
Mike Spear Tribute	20
The Audlem Lass	22
Windermere Quays Marina	24
Sawley Marina Sea Cadets	26
Dura Composites Appoints New BDM	28
Limmasol Marina	30
RYA Knowledge - First Aid Afloat	32
New Berths for Birdham Pool	34
North Sea Sailing Route	36
Gold Anchor Marinas	38
Sailing - White Hills Regatta	42
Port Solent Expansion Plans	44
Marina Software Successful Year	46
EXXpedition Fights Plastic	48
Beds On Board	50
Mer Awards	52
British Marine Training Course	54
Dunkirk Little Ships	56
Dura Composites Scoop Queen's Award	58
TYHA & MIA	60
Pretty in Pink at Fambridge	62
Camper & Nicholson Appoint Dan Hughes	64
Aerial Survey Reveals Secrets of the Solent	66

On the cover : BWML Sawley Marina





# Which-Marina Exhibitors London Boat Show 2018

**B**ookings for the Which-Marina stand at the 2018 London Boat Show are stronger than ever with BWML Marinas the latest member to sign up. They join the following members already confirmed:

- Quay Marinas
- Yacht Havens
- MDL Marinas
- St Katharine's Dock
- TransEurope
- Beds On Board
- R-Marina
- Inland & Coastal Marina Systems
- Dunkerque Marina
- NMU
- IGY
- BWML

Stand Manager, Libby Gordon commented "We are delighted to have BWML onboard and there is still space for your business too but don't delay as space is filling up fast!" With the new look London Boat Show being held over 5 days there are plenty of reasons to join TYHA on this popular stand. Showcasing this year is the new Boating and Watersports Holiday Show and Bespoke London, both will be great attractions bringing new visitors to the show.

[www.which-marina.com](http://www.which-marina.com)

Jeff Whyatt, MD-BWML says "BWML is proud to be part of the Which Marina Stand at the forthcoming, New look, London Boat Show next January. We view this prestigious event as a first class opportunity to promote our brand and Inland Waterway business activities."

Following a successful Boat Show 2017 Kenny Jones, IGY Director says "Having attended the London Boat Show for many years in several different forms, ranging from setting up our own stand to walking the show, there is no doubt that the return on investment in being part of the Which Marina stand is far greater. The primary reasons are that The Yacht Harbor Association (TYHA) management team do virtually all the hard work with regards to logistics when setting up the location. The level of activity produced through well thought out business to business, customer to business and social events by TYHA would take a vast amount of resources to accomplish. Finally, supporting the Gold Anchor Initiative and demonstrating to other marina operators and owners, only serves to increase the value of the investment Island Global Yachting has already committed to this program."

Quay Marinas have been great supporters since Which Marina's concept. Simon Haigh, MD of Quay Marinas commented "Quay Marinas will once again be exhibiting on the TYHA 'Which Marina' London Boat Show stand. The stand and show works well for us, providing an excellent promotional platform for marina berths



and services at a time of year when boat owners are thinking about their berth options and choices. Just as importantly, the Which Marina stand and the London Show still provides a great networking opportunity for both 'business to business' and 'business to customer' contacts. We are looking forward to the new shortened Show format and believe that this will provide a more intensive and cost effective Show opportunity for all involved." The Which Marina Stand is ideally located within Excel and close to the new Inland Holidays attraction, with narrowboats to look around and the Lock Bar to have a refreshment. The Which-Marina stand will be positioned centrally to other marina and marina business exhibitors including, Gillingham and Marina di Portisco, Dover Marina and Walcon to name a few.

Yacht Havens have been exhibiting on the Which-Marina stand for the last 6 years, Group Marketing manager, Jonathan Cook, says of the show "The London Boat Show remains part of our marketing calendar for 2018 and we're very much looking forward to exhibiting in January. The show still provides a great opportunity to meet current, new and prospective boat owners and talk about all the services we provide across our 9 marina locations. Furthermore, London Boat Show also serves as a way to stay in touch with our current berth holders, especially those at Fambridge Yacht Haven in Essex which is less than one hour away from the Excel Arena."

**For further information and to book contact Libby Gordon, 01784 223817 or email [lgordon@britishmarine.co.uk](mailto:lgordon@britishmarine.co.uk)**

December 2017 / Volume 35 / Issue 04

F&A Magazine - Published Quarterly: The publication of TYHA, the trade association for marinas and suppliers striving towards best practice within facilities in UK Coastal and Inland, and International waters. If you would like to unsubscribe to F&A magazine please email 'unsubscribe' to [lgordon@britishmarine.co.uk](mailto:lgordon@britishmarine.co.uk) or contact us by phone on +44 (0) 1784 223 817.



DOWNLOAD F&A DIGITAL

#### HEAD OFFICE:

Marine House, Thorpe Lea Road  
Egham, Surrey TW20 8BF  
[tyha@britishmarine.co.uk](mailto:tyha@britishmarine.co.uk)  
[www.which-marina.com](http://www.which-marina.com)

#### ADVERTISING:

Please contact Libby Gordon  
[lgordon@britishmarine.co.uk](mailto:lgordon@britishmarine.co.uk)  
T: +44 (0)1784 223817

#### EXECUTIVE TEAM:

General Manager: Jon White  
Executive: Libby Gordon



# WHAT WE LEARN WHEN THINGS GO WRONG

**C**all them what you will, but an advantage of a gathering of marina managers is that one is able to establish trends but also hear about incidents which are not put on social media or their newsletters!

As well as conferences, The Green Blue has visited a number of marinas in the past to carry out environmental audits and part of that audit covers incident response. Some marinas keep a record of incidents (which is recommended) whilst others have photos on their phone or are able to tell a tale of woe.

One thing for sure is that the bigger the site, the more areas there are which can cause a problem. The marina managers who don't have to deal with refuelling, winter maintenance can all breathe a sigh of relief as these seem to be the commonest areas for teething issues.

Having said that, something that can happen to anyone unfortunately is an event such as a ruptured fuel tank (which is then pumped out by the automatic bilge pump) or a boat fire. These kind of events can be difficult to simulate but try to run through an emergency plan once a year getting the spill

kits out and testing out how you are able to deploy the booms. Do you have a workboat that can be used to effectively boom around a sinking boat? Is the boom long enough?

Sometimes I hear the expression "you can only control what you control". This is very true as if a berthholder spills a load of diesel when refuelling that isn't necessarily your fault. Some marinas only dispense fuel themselves to mitigate that kind of risk so there is an element of imposing your control to some scenarios.

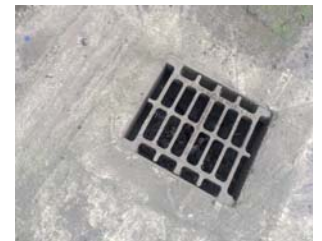


“  
**What is the collective noun for a gathering of Marina Managers?  
A swarm, a shoal, a gaggle?**

A common theme is contractors either working directly on your behalf or working for a berthholder. Some marinas control contractors better than others and have fairly watertight regulations which the contractors have to abide by. But if you do or do not have tight regulations it is always worth investigating where the hazardous waste is going that

the contractor ends up with, are you, the marina paying for it even though the berthholder is paying the contractor.

So make sure you carry out regular checks on contractor activity and also tenants. I've lost count of the number of times when a tenant stores oil illegally or is pouring chemicals down the drain that ends up in the marina.



For more advice and information from The Green Blue visit [www.thegreenblue.org.uk](http://www.thegreenblue.org.uk)



## BEETLE - DOWNSIZE YOUR BOAT NOT YOUR LIFESTYLE

Church Minshull Aqueduct Marina will be attending the 2018 London Boat Show with their new entry level affordable 25ft Beetle show boat which is part of the new Beetle range and are available in 8 configurations with various options for different finishes. Equipped with a reliable Beta Marine engine, Victron Combi inverter charger, shower room, galley and Eperspächer diesel central heating. An alternative to offshore cruising, these boats offer the perfect opportunity to maintain a luxurious lifestyle whilst offering an affordable downsizing solution.

**Adam Porter, Boat Reviewer at Canal Boat Magazine, said:** *"The whole boat weighs just six tonnes and is powered by a Beta 16hp engine. It's remarkable how much you can fit into such a small space, whilst at the stern there's a decent cruiser deck. It is perfectly formed and built to a remarkably high standard and is an ideal way to get on the water".*

“  
**An alternative  
to offshore  
cruising**

**Phil Langley, Marina and Operations Director at Aqueduct Marina, said:** *"Delivering quality services to both our customers and suppliers through our one stop solution is what Aqueduct takes great pride in and we are looking forward to showcase the benefits of downsizing boats whilst still maintaining the lifestyle which, is important for our customers".*

London Boat Show contact on the day: Phil Langley/ 01270 525040  
For more details visit [www.aqueductmarina.co.uk/aintree-beetles](http://www.aqueductmarina.co.uk/aintree-beetles).



## Demon Pressure Washers

### Commercial Marine and Workboat



## High Pressure Cleaning Equipment

Options include 3 phase & diesel engines.

Demon offer a range of specialist cleaning equipment for the marine industry including marinas, shipyards and off-shore workboats to clean windfarms



@DemonPressure

Members of:



Email - [sales@demon-pressure-washers.com](mailto:sales@demon-pressure-washers.com) Telephone - 01752 690690



[www.demon-pressure-washers.co.uk](http://www.demon-pressure-washers.co.uk)





# DEVELOPMENT UPDATE OF THE NEW MARINA AND BOATYARD OPERATIVE APPRENTICESHIP STANDARD



New apprenticeship standards set out the competence needed in an occupation by detailing the knowledge, understanding, skills and behaviours, which need to be applied in the workplace. Accompanying the apprenticeship standard is an End Point Assessment Plan (EPA), which details how Marina and Boatyard Operative apprentices are assessed during the last few months of their apprenticeships and the criteria required to pass the apprenticeship.

The development of a new apprenticeship standard is thorough and takes time and commitment from the employer group who give their much valuable time to produce a robust apprenticeship. So far the draft standard has been produced and the employer group's focus is turning to consider the contents of the EPA Plan. It is anticipated the new apprenticeship standard will be ready for rollout in late 2018.

An earlier edition of Fore and Aft provided information about the Government apprenticeship reforms and the formation and work of an employer group that is developing a new Marina and Boatyard Operative Apprenticeship Standard.

The employer group, chaired by Jon Eads, CMM of Salterns Marina Ltd, and supported by British Marine

and The Yacht Harbour Association, has successfully gained Government approval to develop the new apprenticeship standard. Over the last few months, the employer group has fine-tuned the content of the proposed apprenticeship standard and obtained positive feedback about its contents. Wider industry feedback regarding the content is also being sought from employers.

**“The employer group has fine-tuned the content of the proposed apprenticeship standard**

**If you would like any information about the draft standard, would like to view it and provide feedback, or would like to take a more active role, please contact [cholmes@britishmarine.co.uk](mailto:cholmes@britishmarine.co.uk)**



**The Pontoon & Dock Company Ltd**

QUALITY MARINA EQUIPMENT



Floating Pontoon

EZ Dock is the world's leading manufacturer of high-quality modular floating docks, boat and PWC lifts and accessories.

- Offers Unbeatable Adaptability
- Exceptional performance in rough water
- Superior strength and durability
- More stability than traditional floating docks
- Highly suitable for disabled access

**01283 208891**

**[pontoonanddock.com](http://pontoonanddock.com) • [sales@pontoonanddock.com](mailto:sales@pontoonanddock.com)**

## NEW TYHA MEMBERS

UNITED KINGDOM

**CBRE LTD**

St Martin's Court  
10 Paternoster Row  
London EC4M 7HP

**Contact: Miriam Cipriani**

**Tel: 020 7182 2200**

**www.cbre.co.uk**

CBRE offers a broad range of integrated services, including facilities, transaction and project management, property management, investment management, appraisal and valuation, property leasing, strategic consulting, property sales, mortgage services and development services.

**COX'S BOATYARD LTD**

Staithe Road  
Barton Turf  
Norwich NR12 8AZ

**Contact: Damon Rushmer**

**Tel: 01692 536206**

**www.coxboatyard.co.uk**

Cox's boatyard has over 100 years' experience in boat repairs, boat craneage, boat sales and winterisation to name a few of their services. The next phase of development is in the planning stage and this should change the way they lift boats out of the water using a new travel hoist.

**LITTLEHAMPTON YACHT CLUB LTD**

Rope Walk  
Littlehampton  
West Sussex BN17 5DH

**Contact: Fiona Boyce**

**Tel: 01903 713996**

**www.littlehampton yachtclub.co.uk**

Littlehampton Yacht Club is a small yacht and motor boat club on the River Arun in West Sussex. It is nestled conveniently between Portsmouth and Brighton and can be easily reached by car and rail. The club offers moorings for up to 100 vessels up to 8m in length with hardstanding storage for 40 vessels.



## NEW TYHA MEMBERS

UNITED KINGDOM

**BARRA & VATERSAY COMMUNITY LTD**

Castlebay  
Isle of Barra  
Eilean Siar HS9 5XQ

**Contact: Mr Euan Scott**

**Tel: 01871 810266**

**www.cbab.org.uk**

Barra and Vatersay Community is a community owned company whose aim is to support community development on Barra and Vatersay. The company has been effective in attracting inward investment to the islands and in highlighting issues of importance for the local community.

**THOMAS TELFORD CORPACH MARINA LTD**

c/o Caol Regeneration Co Ltd  
Caol  
Fort William PH33 7DS

**Contact: Douglas MacDiarmid**

**Tel: 07774 790221**

**www.corpachmarina.co.uk**

The Caol Regeneration Company (CRC) was formed in 2005 as a charitable company limited by guarantee, with the object of contributing to the social and economic regeneration of Caol.

**TPA PONTOONS**

Dukeries Mill  
Claylands Avenue  
Workshop S81 7DJ

**Contact: Neil Crosby**

**Tel: 0870 2402381**

**www.tpa-pontoons.com**

TPA Pontoons is a hire provider of both plastic and steel modular floating pontoons for a diverse range of installations across an array of industry sectors.





## GREEK MARINAS ASSOCIATION WINS BID TO HOST ICOMIA WORLD MARINAS CONFERENCE 2018



Filiovos marina – Athens

**T**he Greek Marinas Association (GMA) has been announced as host of the 2018 ICOMIA World Marinas Conference (IWMC) during the meeting of the ICOMIA Marinas Group in Vancouver, Canada on 14 October. The world-renowned travelling Conference will be held 25 – 27 October 2018 in Athens, Greece.

The International Council of Marine Industry Associations' (ICOMIA) World Marinas Conference is the key initiative of the ICOMIA Marina Group's

Outreach and Support Programme. IWMC is aimed at marina owners, operators, developers, consultants, service providers, Government officials, equipment manufacturers, nautical tourism promoters, and port and harbour operators and draws hundreds of delegates and speakers from around the globe.

IWMC is presented by the ICOMIA Marinas Group (IMG), the committee born out of ICOMIA's recognition that ensuring boat owners a safe and convenient place to berth, moor

or launch their boat is vital to the future of the industry.

An active and prominent member of IMG since 2011, GMA was established in 2010 in order to represent, upgrade and promote the tourist ports and marina facilities throughout Greece. Stavros Katsikadis, president of the GMA highlighted the importance of this win for Greek marinas and the city of Athens: "I'm confident IWMC 2018 will be a high-performing, world class event. Delegates will benefit from quality content and the expertise of the exceptional international speakers IWMC attracts. Athens promises to them an unforgettable experience".

The decision to award GMA the bid was made during IMG's autumn meeting, held 12-14 October 2017 in Vancouver, Canada, which 13 IMG members attended and included a tour of 10 marinas on the west coast of Canada.

For more information please  
contact [info@icomia.com](mailto:info@icomia.com)

**The world-renowned travelling Conference will be held  
25 – 27 October 2018 in Athens, Greece.**



## GAEL FORCE MARINAS & PONTOONS

We manufacture heavy duty pontoons, access bridges, walkways and floating concrete breakwaters making us uniquely placed to offer the complete package of; design, build, installation and mooring services.



### SeaHaven Fingers

- Rigid low torsion, trusted and dependable
- Standard lengths 6, 8, 10, 12m
- Standard widths 1m
- Special angles & sizes available



### SeaHaven Pontoons

- Unrivalled, superb torsional strength
- Standard widths 2.0, 2.5 & 3m
- Bespoke sizes and specially strengthened versions possible



### SeaSpan Bridges

- Extensive range of widths and lengths
- Galvanised mild steel or aluminium
- Security, railings, gates, keypads and logos

10 - 12 West Road Greshop Industrial Est.,  
Forres, IV36 2GW  
T 01309 671211  
E [enquiries@gaelforcegroup.com](mailto:enquiries@gaelforcegroup.com)  
W [gaelforcegroup.co.uk](http://gaelforcegroup.co.uk)



Head office Inverness  
136 Anderson Street  
IV3 8RB 01463 229400







# NATIONAL AWARD FOR TROON YACHT HAVEN

**T**roon Yacht Haven has been crowned Best UK Marina/Harbour 2017 in the Sailing Today Awards which recognises the very best in the UK and international sailing world.

The Ayrshire marina beat 4 other shortlisted marinas and harbours for the title which was voted for by readers of the popular UK sailing magazine, Sailing Today. Readers chose Troon over marinas from Cornwall, the Solent, the east of England and the Channel islands. There was further good news for the Scottish west coast with the region being, once again, nominated as the best

Cruising Grounds in the world. Stephen Bennie, Director at Troon Yacht Haven, commented on the award saying, "The marina team work tirelessly to assist berth holders and marina visitors, so this is an amazing way to finish to summer."

"This award follows an incredible 12 months for us. Last summer was the busiest on record for Troon Yacht Haven with The Open Golf Championships in the town. Then our sister-marina, Largs Yacht Haven, was awarded a similar UK Coastal Marina Of The Year award in January. All these things reaffirm that the stunning cruising grounds

of the Scottish west coast is ably supported by 2 of the finest marinas in the UK."

The award was announced at the Sailing Today Awards' reception at the Southampton Boat Show.

Deputy Editor of Sailing Today, praised Troon saying, "The west coast of Scotland is a truly beautiful part of the world, and Troon Yacht Haven is perfectly placed to serve it. As with all Yacht Haven marinas, Troon offers excellent services, modern facilities and friendly staff, making cruising in the area all the more enjoyable."



**For more information please contact: Stephen Bennie, Troon Yacht Haven Director**  
Telephone: 01292 315553  
[stephen@troonyachthaven.com](mailto:stephen@troonyachthaven.com)



## MIKE SPEAR

A familiar face for many, Mike was the vision and driving force behind Suffolk Yacht harbour and the reason they are now in the fortuitous position of celebrating their 50th anniversary. Mike was a renowned offshore competitor and a passionate and accomplished yachtsman. His contribution to the sailing community along the east coast was immense and he will be greatly missed.



“  
**It is with sadness that Suffolk Yacht Harbour announced that in June, founder and Chairman of Suffolk Yacht Harbour, Mike Spear, passed away aged 88.**



# Composite Pontoon Decking



Below surface  
fixings for  
barefoot safety  
and professional  
appearance

## Traditional timber appearance with composite technology

### Applications:

Pontoons  
Fingers  
Jetties  
Marina Walkways  
Mooring pontoons  
Piers

### Benefits:

Low maintenance  
Recyclable materials  
Long lifespan  
Anti-slip surface  
Concealed fixings  
600mm span

**Dura Composites Ltd**  
Dura House, Telford Road,  
Clacton-on-Sea,  
Essex CO15 4LP  
United Kingdom

Tel: +44 (0)1255 423601  
Fax: +44 (0)1255 435426  
info@duracomposites.com

[www.duracomposites.com/ultra](http://www.duracomposites.com/ultra)

**Ultradeck**

**dura**<sup>TM</sup>  
composites

Industrial Rail Marine Landscaping Architectural



## THE AUDLEM LASS AND THE BIG SWITCH ON

For the Audlem Lass Boat Service, based at Overwater Marina on the Shropshire Union, it was a case of David and Goliath in the recent Canal and River Trust 2017 Living Waterways Awards. The little community run boat, which raises funds for the RNLI, was presented with Runner Up in the prestigious Recreation and Tourism category, which saw CRT's Leeds & Liverpool Bicentenary Celebrations crowned winner.

The Audlem Lass Boat Service provides passenger trips from Overwater Marina to the picturesque canal village of Audlem and back every weekend from Easter to the end of October. Over the last five years the boat has transported

over 20,000 passengers and has become one of south Cheshire's most popular mini tourist attractions.

Rodney Cottrell, founder of the Audlem Lass says "Being runner up for such a prestigious award means a lot to the crew who give up their spare time to run the boat, whatever the weather". The boat service plays a valuable role in connecting Overwater Marina

to Audlem and its fabulous range of shops and services as well as providing a great little day out in the beautiful Cheshire countryside.

The Audlem Lass Team also play a key role in organising the annual RNLI Festival and Boat Share Show at Overwater as well as supporting other events in the village such as the Big Switch on which takes place this year on Friday 24th November. The group of volunteers are always on the look out for prospective new crew, so if you fancy giving a few hours a month and love nothing more than messing about on the water please call Joe Hoyles on 07880 727870 or email [joehoyles@vodafoneemail.co.uk](mailto:joehoyles@vodafoneemail.co.uk)

**"**  
**Canal and River**  
**Trust 2017**  
**Living Waterways**  
**Awards**  
**Runner Up**



# HARBOUR

ASSIST



A new generation of harbour and marina management software.



Whether you're managing the largest international harbour, or an independent family-run marina, keeping a tight ship is critical.

- Secure "Cloud" based solution, accessed from any location, on any device.
- Integrated CRM, every customer, all of their contact and boat info, preferences & history.
- Bulk invoicing, Contract renewals, emailing, letters, SMS and e-marketing.
- Full operational and financial reporting.
- Instant "Live" view of Customers, including their Vessels, Contracts, Renewals, Payments and Communications.
- Mobile and online payments built in.
- Location/Asset Management, Maintenance scheduling and logging, Task Management and Resource scheduling.
- Military-Grade Hosting; ISO 27001:2005 Audited and Certified and PCI Level 1 Certified.
- Data is 100% safe and 100% protected.

[www.harbourassist.com](http://www.harbourassist.com) | [info@harbourassist.com](mailto:info@harbourassist.com) | 01208 590616

BRITISH  
MARINE  
LEADING THE INDUSTRY

canal & river  
trust

The Yacht Harbour  
Association

PayPal Partner

# HARBOUR

ASSIST



# WINDERMERE QUAYS MARINA


Work has been completed on the key phase of a major refurbishment and extension programme at Windermere Quays Marina in the UK's Lake District National Park. The project involved the reconfiguration of the existing marina into a new layout together with the addition of new pontoons to provide additional berthing space.

The existing Walcon System 21 finger pontoons and piers were refurbished before being redeployed. Arrays of Walcon's Waliflote wave-attenuating pontoons were also added at either end of the marina to provide protection to the boats within. Other aspects of the project included the extraction of the existing piles and the driving of new ones to conform with the new layout. The swinging moorings were also relocated and the electrical and water provision on the pontoons refurbished.

"The increasing size of boats on Windermere as well as greater overall demand required us to update our marina," said Grahame Armer, managing

director of Windermere Aquatics, the parent company of Windermere Quays Marina. "Working with Walcon and Marina Projects we have increased the number of berths from 184 to 260, with an emphasis on having more capacity for boats in the 30 to 50 feet range. The overall footprint including the moorings has doubled, to allow more space for the larger boats to manoeuvre."

The original marina was built by Walcon over the course of 2004 to 2006, and the company has been back over the years since for modifications and minor upgrades. This year's project had the added complexity that all the current berth holders had to be relocated as the works went on, necessitating a rolling programme of activity as the works progressed along the seven piers. Later in September the existing piers will be joined by an eighth, bringing the marina up to full strength.



Walcon completes key Phase of a major refurbishment and extension programme at Windermere Quays Marina in the UK's Lake District National Park.

For more information  
about Walcon Marine  
Visit the website  
[www.walconmarine.com](http://www.walconmarine.com)



## LONG EATON SEA CADETS CHOOSE SAWLEY MARINA FOR THEIR NEW BASE



**B**ritish Waterways Marinas Ltd (BWML) was delighted with the arrival of the Long Eaton Sea Cadets, who are establishing their new base at Sawley Marina in Nottinghamshire.

On Thursday 10th August 2017, the Sea Cadets were officially welcomed to Sawley Marina by marina staff, local dignitaries and families of the cadets.

Barry Singleton, Officer in Charge, Long Eaton Sea Cadets commented, "We have forged

extremely strong links with Sawley Marina and this has been down to their generosity. They have made us very welcome and have pulled all the stops out for us. From that point we can officially base our boating operations and training at the marina, continuing to improve and provide a first class service to the cadets. The facilities at the marina more than cater for this and the cadets, after having a tour are extremely excited at the prospect of moving there."

The Sea Cadets are a

national youth organisation sponsored by the Ministry of Defence and the Royal Navy. Julie Cutts, BWML's Marina Manager commented, "I am absolutely delighted that the Long Eaton Sea Cadets have chosen to base themselves at Sawley Marina. It will be a pleasure working alongside an organisation supporting young people from the age of 10 up to 18 years. The Cadets will be supporting our marina events and will provide a presence on a regular basis."

**"**  
**We have forged extremely strong links with Sawley Marina**



**World Class Design, Manufacture & Installation**

**MARICER**  
The Marine Equipment Specialist

Maricer (CPES Ltd)  
Vale Industrial Estate, Spilsby,  
Lincolnshire PE23 5HE  
United Kingdom

[www.maricer.com](http://www.maricer.com) [sales@maricer.com](mailto:sales@maricer.com) +44 (0) 1790 753164



**T: 01491 636293 F: 01491 636313**  
**E: [sales@yachtlegs.co.uk](mailto:sales@yachtlegs.co.uk)**  
**W: [www.yachtlegs.co.uk](http://www.yachtlegs.co.uk)**

### Yacht Cradles

- Galvanised steel
- Stackable
- Transportable
- Suitable for 22'-55'



### Powerboat Stands

- Stackable stands for motor cruisers
- Suitable for 18'-60'





## NEW MARINE & LEISURE SECTOR BUSINESS DEVELOPMENT MANAGER TO DRIVE UK MARKET GROWTH



traditional materials for both Marine and Leisure applications.

With a formidable reputation for innovation and excellence in customer service, it's a great time to join the team at Dura Composites, which recently won the prestigious Queen's Award for Enterprise and has ambitious growth plans for the next 12 months.

Commenting on Fuller's appointment, Dura Composites' Managing Director, Stuart Burns said: "I'm delighted to be welcoming Dean to the team. He brings a wealth of expertise gained within the Marine and Composites industries and is a great addition to our experienced salesforce. We're confident that Dean has the perfect skill set and customer-focused approach to shape our business development plans for these exciting sectors which are already benefitting from our safe, durable, anti-slip and low maintenance flooring and decking materials.

**D**ura Composites, a leading supplier of composite products for decking in the Marine and Leisure industries has bolstered its salesforce with the appointment of Dean Fuller as Business Development Manager. With over 25 years' experience

in the Marine industry, Fuller will be driving new business opportunities across the Marine and Leisure sectors, focusing on the market-leading GRP Dura Grating, Composite Timber Ultra Deck and PVC Park Deck product range, which offer a range of great benefits versus

“  
**Over 25 years experience  
in the Marine Industry**

For more information  
about Dura Composites'  
Marine solutions visit  
[www.duracomposites.com/marine](http://www.duracomposites.com/marine)

# WISE

Base Marine  
*Making a WISE  
choice*



**This 16 Wheeled Monster** is equipped with our renowned multi-mode steering system. So while it may be a big machine, it can still maneuver in the tightest of spaces.



Tel: +44 (0)1535 272033

[www.wisehandling.com](http://www.wisehandling.com)

[sales@wisehandling.com](mailto:sales@wisehandling.com)



# LIMASSOL MARINA

**L**imassol Marina, managed by Camper & Nicholsons Marinas is delighted to announce that construction is now complete on the final Island Villas at Limassol Marina, Cyprus' first superyacht marina. With the majority of these elite homes already occupied, just 20 properties are now available for sale, offering buyers the final chance to purchase a villa on the sea in this region of the Mediterranean. An unrivalled concept on the

shores of Cyprus, these luxury and uniquely designed residences offer the pinnacle of waterside living. Each villa benefits from either its own exclusive water-space or designated private berth attached to the individual property, offering mooring for yachts of up to 60m.

Immersed in the tranquility of sparkling azure waters, this dual property and berth ownership package includes the comfort of the marina's

secure surroundings, as well as the convenience of its first-class facilities. For owners without a yacht, the private water-space can be used for a range of leisure activities. Epitomising the essence of 'living on the sea' a mere stroll from the city centre, the villas are also just metres away from the beach, and the development's dining, shopping, fitness, leisure and cultural facilities.

In a success story that spans over eight years, Limassol



Marina, Cyprus' first superyacht marina, also its first 'Blue Flag' and '5 Gold Anchor' marina, has been rising against all odds to deliver a unique residential offering to property buyers from over 30 nationalities. A limited number of villas remain available for sale, with 40 per cent of the final release of luxury apartments in the sea at Castle Residences already sold or reserved.

Andreas Christodoulides, CEO of Limassol Marina, comments: "Those familiar with the marinas of the Mediterranean will instantly recognise this is a once in a lifetime opportunity. With Limassol Marina's growing reputation as one of the most

exciting and 'must visit' destinations in the continent, we are confident the strong national, international and global interest for these villas will continue."

Prices of remaining Island Villas start from €2.9 million for a three bedroom property.

For more information on Limassol Marina or to arrange a private viewing of the ready to move into villas, contact +357 25 020 020 or visit [www.limassolmarina.com](http://www.limassolmarina.com)





# FIRST AID AFLOAT

**Accidents happen when you least expect them that's why it's always a good idea to consider first aid. Here are some top tips on things to consider before going afloat.**



01

## LAND AND SEA ARE DIFFERENT

The one-day RYA First Aid Course has been specifically designed for all who go afloat, on inland waters or the sea, and is taught by instructors who have considerable boating experience. Topics covered include CPR, drowning, bleeding, head injuries, cold water shock and hypothermia, first aid kits and getting medical assistance.

Ideally everyone should do the course, it's difficult for one person to navigate, steer the boat, use the radio and resuscitate at the same time!



02

## PACKING A FIRST AID KIT

Consider what would you take on an ordinary holiday, a little off the beaten track perhaps?

Big bandages, plasters, pain relief tablets, anti-inflammatories, indigestion tablets, diarrhoea medication, allergy treatment, prescription medications, all depending on your family's needs.

What about extras for a boat? Motion sickness tablets are a must as seasickness can lead to severe dehydration, and add rehydration salts to the kit, as they are much better than water.

High factor sun cream is important. Long days in the sun, with the rays reflecting off the water as well, make sunburn high risk.

A useful bit of kit demonstrated on RYA First

Aid Courses is a pocket mask. They are highly recommended as they make CPR easier in restricted spaces. Having a first aid book aboard is a good idea too for checking symptoms or the treatment. A book is provided on the RYA First Course.



03

## DITCH THE PHONE

Always use VHF radio to get medical advice or help when afloat. In a '999 situation', press the Distress Alert button and send a Mayday, but if non-emergency medical advice or assistance is required contact the Coastguard by VHF.

The coastguard can coordinate the response, and can provide medical advice from a doctor, organise a helicopter or lifeboat, escort your boat into a marina and arrange an ambulance, if required.

Using VHF means that all boats in the vicinity will be aware, and may be able to help.

A phone is definitely second best in this situation; reception can fail or the battery or credit may run out, and you are unable to speak to helicopters or lifeboats.

04

## BE AWARE OF COLD WATER SHOCK

Even if it's 30°C and sunny cold water shock is a risk. Water temperature off the UK can be as low as 5°C in February and rarely rises above 18°C.

The initial reaction to falling into water is cold shock. Gasping, rapid breathing and increased heart rate can lead to cardiac arrest or stroke. In a fitter individual the gasping may lead to the inhalation of water into the lungs.

Getting a casualty out of the water is the priority; then an awareness of hyperthermia treatment is paramount. This may include an evaluation in hospital to avoid a delayed reaction.

Even mild hyperthermia is a risk, getting cold sitting on deck for a long time, so know what to look out for and how to react.

05

## ALWAYS DO SOMETHING

In a desperate emergency, when resuscitation is required, many people worry that they can't remember exactly what to do, but the Resuscitation Council advise that it's better to do something rather than nothing.

Be persistent. There are some extraordinary cases of people surviving after CPR from a team of people - another reason it's important to have more than one person trained.

Boating shouldn't be stressful, and thankfully serious incidents are rare. But getting to grips with basic first aid will ensure everyone on board will be in good hands should the unexpected occur.

## BIRDHAM POOL MARINA UNVEILS PLANS FOR NEW BERTHS FOR 2018

**B**irdham Pool Marina is delighted to announce plans to construct some new pontoons in the marina which will result in a further 28 new berths of between 6 to 12m being added to the marina. The berths will be ready by the start of next season (April 2018). Work will commence on the pontoons in Autumn 2017.

Marina Manager John Hiltunen said "we are in the fortunate position of being a popular marina due to the fantastic location; wonderful setting and historically maritime feel of Birdham Pool, so it's really nice that we will be able to offer a few more berths instead of having to turn people away"

Birdham Pool Marina pictured below is a chocolate box marina set in the sheltered and beautiful cruising grounds of Chichester Harbour.

Castle Marinas Ltd, owners of Birdham Pool, have made several enhancements to the marina over the last two years in terms of the storage and lifting of boats plus better

tenant facilities, whilst still retaining the pretty, quaint and traditional feel that the berth holders love so much.

Operations Director Mike Braidley says "the new pontoon will not affect the beautiful setting of the marina, and will improve access to other pontoons in the Pool. We needed to clear some of the silted up areas within the marina, and it's a real bonus that we've gained back some of berths we had historically given up"

"Anyone interested in a berth at Birdham Pool Marina is advised to contact John, the Marina Manager or the Birdham Pool team as soon as possible as

It is anticipated that the new berths will be very much in demand."

Castle Marinas Ltd owns and operates seven marinas in the UK. Five on the inland waterways and two coastal marinas, Birdham Pool and Royal Clarence Marina in Gosport which operate a reciprocal berthing scheme.



For more details about Birdham Pool Marina or Castle Marinas Ltd log on to [www.castlemarinas.co.uk](http://www.castlemarinas.co.uk)  
Contact John Hiltunen or Sue Mould on 01243 512310  
email [info@birdhampool.co.uk](mailto:info@birdhampool.co.uk)



## HavenStar

The Ultimate in Marina Management Software

- Single or Multi-site • On premise or online • Multi-lingual support
- Full Multi-currency transaction processing and reporting
- Advanced contact relationship management – includes membership
- Berthing efficiency and occupancy reporting
- Deferred revenue and forecast analysis

### Options include:

- Synchronisation with MS CRM (on premise or online service)
- Integrated Website Bookings
- Boat Yard Manager Handles all plant and job scheduling
- Integrated EPoS
- Pedestal integration (including Rolec, Meter-MACS, et al)
- Dockside Manager Real time Smartphone or tablet connection

**STAR**

Call us on: +44 (0)1923 246414

Email: [sales@starplc.com](mailto:sales@starplc.com) or visit our website: [www.havenstar.com](http://www.havenstar.com)

**BRITISH MARINE**  
LEADING THE INDUSTRY



# NORTH SEA SAILING ROUTE

One of TYHA's members, Sylvie Logie, who manages Plaisance Cote d'opale, has joined forces with some marinas in Belgium, France, Netherlands and England to help develop tourism in these countries.

The North Sea Sailing Route scheme offers 50% discount for up to three days per year at each of the member marinas

and to benefit from this offer, the marinas' members will have to display their marina card on arrival.

Sylvie is hoping that this will create the first "North Sea Sailing Route" and encourage sailors not only to cruise and moor in participating marinas, but also to venture to marinas and countries they may not have thought possible.

The following marinas are involved in the scheme:

- Tollesbury Marina, Essex, England
- Dover Marina, Kent, England
- Dunkerque Marina, France
- Gravelines, France
- Boulogne-sur-Mer, France
- Etaples-sur-Mer, France
- Jachthaven Andijk, Holland
- Marina Port Zelande, Holland
- Royal Belgian Sailing Club, Belgium
- Mercator Marina, Belgium
- Koninklijke Yacht Club, Belgium

## ANCHOR IN NORTH SEA MARINAS!

“  
For further information please contact  
Sylvie Logie on  
[s.logie@boulogne-deveoppement.com](mailto:s.logie@boulogne-deveoppement.com)







#### ROYAL QUAYS 🏆 🏆 🏆 🏆 🏆

Built around the historic Albert Edward Dock, Royal Quays Marina is a premier boating facility in the north of England. Situated close to the River Tyne entrance, the Marina is ideally placed for access to the open sea and for cruising on the sheltered waters on the River Tyne. The marina offers a full range of marine services for sail and motor craft. Operated by the Quay Marinas Group, it is one of their 7 sites situated around the UK. Following recent major investment in the marina Royal Quays has seen their accreditation move from 4 to 5 Gold Anchors. Managed by Matt Simms, who is undoubtedly proud of this achievement commented, "We will fly our new 5 Gold Anchor flag with Pride! The team at Royal Quays Marina are extremely pleased to be awarded with the '5 Gold Anchor Award'. We are all committed to making our marina the best it can be, and going that extra mile for our

customers, whilst our head office team are committed to continued reinvestment in the marina infrastructure. It is gratifying to see that all our efforts have been recognised with the 5 Gold Anchor Award and that our marina has been independently judged to rank with the best in our industry."

Assessed by Andrew Jagers he added, "For 20 years Royal Quays has been a very popular full service marina, well known for its high standards of experienced management and customer service, its accessibility 24/7/365 and its connections to Newcastle and other local attractions. Recent significant investment in a café, bar and restaurant, and additional luxurious customer facilities have placed the marina firmly into the Five Gold Anchor category, making it arguably the finest marina destination in the north-east."

#### AD BAR MARINA, MONTENEGRO

Located in the Bay of Bar, undoubtedly one of the most unspoilt coastlines of the Adriatic, Ad Bar marina was established in 2001 and now offers 700 serviced berths. Following assessment and significant action plan work by the Ad Bar Marina team the marina has been awarded 3 Gold Anchors. During the next 3 years further investment is planned with the objective of providing a higher level of service to customers and increasing their Gold Anchor rating.



Their Assessor, Tony said "I was very impressed by the professional manner that the directors and managers of AD Bar had prepared for the assessment process in

conjunction with consultants. Particularly so with the attention to detail to environmental issues within the stunning Adriatic coastline."

#### BRIGHTON MARINA

Brighton Marina, part of the Premier Marinas Group, situated within the Brighton Marina Village Complex is the largest UK marina currently with 1357 berths together with full boatyard facilities, associated tenants and covers an area of approx. 127 acres. Construction of the marina commenced in 1971, it opened for business in 1978 and was officially opened by Queen Elizabeth II in 1979. The marina was extended in the early 1980's to the current layout with the inner basin partly filled to provide additional land for residential development.

The most recent phase of development has provided additional waterfront apartments together with retail and café / bars many with sea and marina views. The Assessor was pleased to note that Premier Marinas Ltd

have continued to improve the wet berthing since the last assessment in 2014 with an extensive and ongoing replacement programme of piles and pontoons together with additional larger beam berths acknowledging todays changing

customer requirements. This has been reflected in increasing occupancy especially over the past 6 to 9 months. Brighton Marina still remains a popular choice with local and southern counties with central London approx... 1 hour.



"We are delighted to once again be awarded the 5 Gold Anchor accreditation. This is a reflection of all of the hard work put in by my team and Premier Marinas' continued investment in Brighton Marina."



**FALMOUTH MARINA**

One of 9 marinas in the Premier group and the furthest west, Falmouth Marina is located to the north of the main town and commercial harbour of Falmouth, offering 343 sheltered fully serviced pontoon berths together with the recent installation of a dry stack storage facility. It is one of the largest natural deep-water harbours in the world sheltering in the waters of the Fal Estuary. It is set in a designated area of outstanding natural beauty and the estuary offers up to 12 miles of glorious boating water that stretches as far as the cathedral

city of Truro with numerous creeks, wooded shorelines and quays to explore along the way.

Tony Dye, TYHA Gold Anchor Assessor says of the marina, "Falmouth Premier Marinas commitment to ongoing improvements has recently resulted in the opening of new luxury bathroom facilities, further enhancing the shore facilities for their customers. The Assessor was impressed to see continuing improvements and presentation of the site since the previous assessment. Mark and his team are congratulated on this" Mark Evans is justifiably

delighted to achieve 5 Gold Anchors and commented "We are delighted to achieve 5 Gold Anchors at Falmouth Marina. A continual programme of investment by Premier Marinas has improved many aspects of the marina over the last few years. From the addition of the Dry Stack to the boatyard, to a refurbished marina bar and restaurant, extra parking and luxury berth holders' facilities. To receive recognition of this is fantastic. There are more improvements planned for the marina in the short, medium and longer term that will raise standards even further".

## “ Falmouth Marina has been awarded 5 Gold Anchors



Falmouth Marina

**CARRICKFERGUS MARINA**

Opened in 1985 it is owned and operated by the new Mid and East Antrim Borough Council and lies on the north shore of Belfast Lough and provides 320 serviced berths. Local Assessor, Andrew Jaggers, who has awarded Carrickfergus Marina 5 gold anchors says, "Carrickfergus Marina continues to provide a wide range of services to its customers, visitors and community partners at a consistently high standard, while maintaining existing infrastructure and investing in modernising facilities. A recent customer survey indicates overall satisfaction and



completion of the action plan following the recent Gold Anchor Assessment confirms retention of Five Gold Anchor

status" The marina continues to offer a wide range of services to its customers, visitors and partners to a good standard.

**ALBUFEIRA MARINA**

With 475 fully serviced pontoon berths, Marina de Albufeira is one of the largest marinas providing a full range of services to the marine & leisure sectors being located almost mid-way along the stunning Algarve coast making it an ideal base and destination for both sail and motorboats. The area is a very popular tourist area and the marina hosts a variety of water sports & leisure activities together with excursion boats. The marina still remains popular home base for many Portugese and international sailors taking advantage of the Algarve coast for either cruising or a stop off point. Jose Massapina and his team



continue to provide excellent customer service and this can only be enhanced when the

forthcoming redevelopments of the shore facilities is completed.





gone over and above for their support of the harbour, and this year it went to James Lovie. James was a fisherman for many years, officially starting at sea in 1953, and skippered the 'Progress' from 1968 until his retirement 1997. The plan was to play golf in his retirement, but James only lasted a year without being at sea, buying a creel boat, the Moray Pearl, in 1998. The Moray Pearl acts as the start boat and safety boat for the regatta each year. James has also served on the board of the Harbour Commissioners since 1961, and was chairman for 10 years. His knowledge and understanding of the harbour and the sea brings invaluable insight to the harbour commissioners and he is always generous with his time and his experience to newer entrants.

## WHITEHILLS REGATTA 2017

The annual Whitehills Regatta was held on Saturday August 12, and 14 yachts in total took part in the four races. Conditions were good, and Race Director Charlotte Hovgaard took charge of the days racing in The Galley, where free hot drinks and bacon rolls were provided to the participants during their briefing.

The racing was lively, and prizes were presented as usual at the Playing Field Pavilion in the evening, where food was

kindly donated by Downies of Whitehills and George Moir bakers. This year, for the first time, Whitehills Rowing Club held a race of their own during the day, with the skiff 'Heave Awa' sending out two crews to complete a timed and hotly-contested course.

Libby Gordon from The Yacht Harbour Association was our special guest, and she presented the biggest award of the night. The Gold Anchor is awarded to someone who has

Entry fees from the race, plus the money raised at the charity auction, meant that Vice-Chair of Whitehills Harbour Commissioners, Jimmy Forbes, was able to present a cheque for £750 to Jenny Abel of the Whitehills Ladies Lifeboat Guild at the Macduff Lifeboat Open Day and thanks go to all participants for their generous contributions, and the businesses who kindly donated prizes for the auction.

## TAYLOR FUEL CONTROL



PROVIDING DIESEL AND PETROL FUEL SYSTEMS  
WITH THE HIGHEST LEVEL OF ENVIRONMENTAL PROTECTION



### Over 50 Years of Industry Experience

**DESIGN, BUILD AND INSTALLATION**  
Specialising in bespoke fuelling solutions...  
Self-contained Fuel Pontoons, Pontoon based Fuel Dispensing Pumps, Land Based Tanks, Monitored Pipework - All easy to use and maintain.



Unit 4 New England Ind Est, Hoddesdon, Herts. EN11 0BZ  
[www.taylorfuelcontrol.com](http://www.taylorfuelcontrol.com)  
Tel: +44 (0) 1992 451101 info@taylorfuelcontrol.com



## Inland and Coastal Marina Systems Ltd.



FLOATING PONTOONS AND CONCRETE BREAKWATERS SUITABLE FOR ALL MARINA APPLICATIONS. MOORING AND ELECTRICAL SERVICE OPTIONS AVAILABLE.

**UK Office:**  
Unit 2  
21 Coulardbank Industrial Estate  
Lossiemouth  
Moray IV31 6NG  
Tel: 01343 813233/815382  
International: +44 1343 813233/815382

**Republic of Ireland Office:**  
Queen Street  
Banagher  
Co. Offaly  
Tel: 057 9153963  
International: +353 57 9153963

Email: [sales@inlandandcoastal.com](mailto:sales@inlandandcoastal.com)  
Web: [www.inlandandcoastal.co.uk](http://www.inlandandcoastal.co.uk)

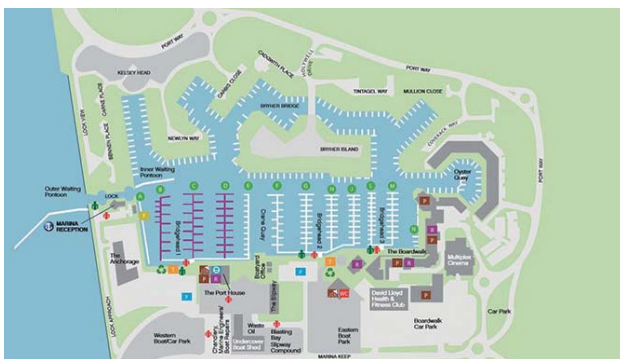


## PORT SOLENT MARINA TO ACCOMMODATE BIGGER BOATS BY 2018

In a project representing a £480,000 investment, Premier Marinas prepares plans to revitalise Port Solent Marina's infrastructure to allow the marina to accommodate bigger boats by the 2018 season.

The project includes reconfiguring pontoons A-D and the plan is to provide berths to make Port Solent into a marina that can host boats from 6.5m up to 33m. Additionally, this reconfiguration work will provide the opportunity for wider fairways and the renewal of pontoons and walkways. General Manager, Graham Bristowe, commented: "Port Solent was built in the 1980's and since that time manufacturers have made boats both longer and wider, which has meant that our current pontoons are now dated. This upcoming project endeavours to modernise the infrastructure of Port Solent, allowing it to berth larger boats which is expected to be particularly popular with motor boat owners."

The works will begin early in 2018 in preparation for the new season, with the aim of making Port Solent's berthing better suited to accommodate both the current population of boats and bigger boats.



“  
**This upcoming project endeavours to modernise the infrastructure of Port Solent**

# nmu

## Comprehensive, Specialist Marine Trade Insurance

Marine trade is a highly specialised industry, but our policy meets the diverse and complex needs of:

- Boat builders and repairers
- Hire fleet operators
- Watersport centres
- Boatyards
- Marina operators
- Chandlers
- Sailmakers
- Mooring providers
- Marine engineers
- Marine electricians
- Yacht brokers and similar trades

Speak to us for more information or search for **NMU Marine Trade** online

As one of the UK's largest Marine Trade insurers, we are proud to be partners of the **Marina of the Year Awards**



NMU is authorised and regulated by the Financial Conduct Authority  
Registered Office: Goodbaird House, 9 Infirmary Street, Leeds, LS1 2JP

**nmu.co.uk**



## CUSTOMER SERVICE AT BEAULIEU RIVER AND BUCKLER'S HARD YACHT HARBOUR

In an investment to improve customer services, the Beaulieu River and Buckler's Hard Yacht Harbour has just completed its first season with a new electronic harbour management system.

The initiative has been made possible by major upgrades in the provision of Wi-Fi at the marina for mooring holders and visitors.

The Buckler's Hard Yacht Harbour team is now able to offer the best possible service, using up-to-the-minute information provided by the Harbour Assist management tool.

The electronic system is the latest initiative introduced to update services and facilities for customers, while still preserving the natural charm and unique character of the Beaulieu River.

Harbour Master Wendy Stowe said: "As this was the first electronic harbour management system we had used, moving to Harbour Assist was a major task for us. The transition has run smoothly, however, and the team now has a more efficient way of working.

"Using Harbour Assist is allowing us to offer a far better service to customers, with instantly updated information at our fingertips."



For further information see [www.beaulieuriver.co.uk](http://www.beaulieuriver.co.uk)

Harbour Assist Commercial Director Nick Gill said: "We are delighted to have Wendy and her team on board and believe that team-wide collaboration, universal access and connectivity in any location, be it harbour office, on the water, or the boatyard is the key to driving efficiency and improving on an already great customer service at Beaulieu."

Wendy, who is working with a new team to deliver services at award-winning Buckler's Hard Yacht Harbour, recently gave a talk at Southampton Boat Show about her role and becoming one of the first female Harbour Masters in the south.

Russell Bowman, Managing Director for the Beaulieu River, said: "Our aim is to keep pace with modern demands and deliver the best possible customer service for mooring holders and day visitors, while retaining the timeless quality of one of the most picturesque settings on the south coast."

Buckler's Hard Yacht Harbour, in the heart of the New Forest National Park, is one of the few privately owned estuaries in the world and has a coveted top rating of five Gold Anchors. With 115 marina berths, over 300 moorings and a boat park with slipway, the fully serviced marina offers a boatyard, fuel and valet service with provisions for convenience.

**“  
First Season complete using Harbour Assist management tool, helping keep pace with modern demands**



**Equipment Training  
&  
Competency Assessments**



**The Pontoon & Dock  
Company Ltd**

QUALITY MARINA EQUIPMENT

### **Pontoon & Dock Equipment Training & Competency Assessments**

The Pontoon and Dock Company are pleased to announce their provision of marina and boat yard **equipment training and competency assessments**. Using certified instructors, the training is available across a wide range of equipment at customers sites and is approved by some insurance providers.  
Contact us for more information.

**+44 (0)1283 208891**

**[www.pontoonanddock.com](http://www.pontoonanddock.com) • [sales@pontoonanddock.com](mailto:sales@pontoonanddock.com)**



## EXXPEDITION FIGHTS PLASTIC POLLUTION AT ST. KATHARINE DOCKS, LONDON



**M**anaged and operated by Camper & Nicholsons Marinas, St. Katharine Docks, located in the city of London, are very excited to welcome the eXXpedition team on Leg 3 of their Round Britain 2017 trip.

The all-women team are sailing around the British Isles, sampling the waters for plastics and toxics as they go. They are collecting data, footage and findings to add to the worldwide

data set of plastics and toxics in the ocean. On their travels, they will engage with local people, holiday-makers, media and politicians, giving information about the implications of ocean pollution, from making everyday choices to action at the political level for a cleaner, healthier environment.

Paul Tetlow, Marina General Manager at St. Katharine Docks, comments, "At St. Katharine Docks we are always

encouraging a greener-marina environment, so therefore delighted to help support this all-women sailing team in their amazing endeavours of collecting as much information and data as possible about the plastics and toxins around the British Isles. Building awareness and helping promote these initiatives are a great way of helping create a cleaner environment for everyone to enjoy."

“  
eXXpedition team are on Leg 3 of their Round Britain 2017 trip sampling the waters for plastics and toxins

# SUBLIFT

BY SWEDESHIP

THE SAFE, COMPACT, SELF-PROPELLED SUBMERISBLE BOAT CARRIAGE



For the  
**BEST OFFER**  
contact Sublift!

For experienced  
**LOCAL SERVICE**  
call Alan Flipping  
**0778 842 80 66**



sales@sublift.se | www.sublift.se



MDL PARTNER WITH

# BEDS ON BOARD

**B**eds on Board and MDL Marinas have announced the world's first partnership between the sharing economy and a marina group. This exciting announcement, made at Southampton Boat Show, will allow MDL members a safe and easy way to rent out their boats to overnight guests, without being disruptive to the marina environment.

The move, which is another step towards Beds on Boards' aim of offering travelers a million new beds around the world without any construction,

will benefit thousands of boat owners across MDL's network of 120 marinas worldwide, and many more accommodation seekers.

Co-founder of Beds on Board, Jason Ludlow, says "this exciting partnership shows our commitment to working with the marine industry to help grow the boating community and to help owners offset their costs. We're looking forward to working with MDL to offer their members a managed solution for renting their boat on [bedsonboard.com](http://bedsonboard.com)." Beds on Board was set up in

2015 in response to accommodation demand, and figures that showed that the majority of boats were unused up to 95% of the time. Since then it's seen boats listed in over 80 countries, with tens of thousands of new people being introduced to the marine industry, and thousands of owners offsetting their annual berthing costs.

Users of the site can search for boats in their desired location, before chatting to the owner through a secure Message Centre. After a stay, both the user and owner are encouraged to

write reviews in order to grow trust and the community. Dean Smith, Commercial Director at MDL Marinas, commented: "Within the tourism industry there is a growing appetite for alternative, unique accommodation and we're thrilled to offer our members access to this audience through our partnership with Beds on Board. The platform will offer our members a hassle-free, safe and fully-managed approach to book out accommodation on their yachts, helping our members to create additional value through their boat ownership.

"At MDL Marinas our unshakeable benchmark is to maintain a leading position within the industry, so it is essential we continue to evolve and provide access to services such as Beds on Board. Our dynamic network of marinas across the UK and Europe are situated in a variety of stunning locations, affording users of Beds on Board the opportunity to experience a stay on the water and see the local area from a novel perspective."

Boat owners can list their boat for free at [bedsonboard.com](http://bedsonboard.com) from today, in order to be ready to benefit from the full service launching on October 1st.



For more information visit the website [www.bedsonboard.com](http://www.bedsonboard.com)





# MARINA EURO- REPORT AWARDS

The inaugural Marina Euro-Report Awards were presented to winners of trophies and citations at the start of the 3rd Poole Harbour Boat Show by Kerrie Gray, Manager of Poole Quay Boat Haven, at her marina on 19 May.

It is fair to say that boat-builders could not continue producing new models if there were no marinas to moor them and the marinas, in turn, depend on the infrastructure and equipment provided for them by manufacturers of products for the marina industry.

To emphasise the importance of the supply side of the industry, Marina Euro-Report's series of Awards encompass five distinct categories each with two complementary products. One entry in each category was awarded First Prize and there was also a Citation for the runner-up.

## The winners in 2017 Pontoons/Decking

- Vira Soluzioni Srl (Italy) Trophy for Parking Boat inflatable berth
- Walcon Marine Ltd (UK) Citation for access pontoon for disabled sailors

## Fenders/Dock Fixtures

- Martini Alfredo SpA (Italy) Trophy for Intermediate Floating Module guide ring for piles
- Polytec Thelen GmbH (Germany) Citation for polyurethane fenders for jetties

## Pedestals/Pump-Out Systems

- Maricer (CPES) Ltd (UK) Trophy for Atlantis service pedestal
- Rolec Services Ltd (UK) Citation for BerthMaster Online marina services

## Boat Moving/Dry Storage

- Boat Lift Srl (Italy) Trophy for Croc Lift tracked amphibious boat hoist
- Nautipark (France) Citation for Rack'Up boat storage racks

## Boatyard Equipment/ Workboats

- Graco BVBA (Belgium) Trophy for Xtreme NXT mobile airless paint sprayer
- Conver (The Netherlands) Citation for C96-5 mowing boat

Next year, the MER Awards will be presented during the 35th Palma International Boat Show in the Balearic island of Mallorca.



# We Pump Out to your Requirements



Clean



Compact



Mobile



Simple to use



Efficient



Cost effective

We offer a complete range of  
Pump Out Systems for  
every application



T: +44 (0) 1295 770000  
[www.leesan.com](http://www.leesan.com)  
[sales@leesan.com](mailto:sales@leesan.com)







## INTERMEDIATE MARINA MANAGERS COURSE

20 – 23 February 2018 – Southampton, UK

British Marine and the Marina Industries Association (MIA) are jointly holding the internationally renowned Intermediate Marina Manager Course (IMM) in Dubai. This four-day course is designed to provide marina personnel in a leadership position with fast-track training in the critical issues of marinas. It is aimed at managers, supervisors and foremen who have had at least one full year of experience working at this level.



Leading speakers will present a wide variety of topics including: Leadership Development; Health and Safety; Budgeting and Accounting; Environmental Management; Maritime Law; Customer Service.

Each day is packed with a range of learning opportunities, including formal classes and lectures, informal discussions, field trip to nearby marinas, group projects, marina/boatyard industry networking and evening classes and discussions.

[www.britishmarine.co.uk/Events-and-Courses/Training-Courses/Intermediate-Marina-Managers-Course-UK](http://www.britishmarine.co.uk/Events-and-Courses/Training-Courses/Intermediate-Marina-Managers-Course-UK)

Further information is available from Liv Whetmore –  
lwhetmore@britishmarine.co.uk / 01784 223631



### The Pontoon & Dock Company Ltd

QUALITY MARINA EQUIPMENT

**Roodberg**  
Boat Movers

Roodberg's high quality, low maintenance boat movers have been designed to safely transport boats of various sizes and weights to and from the water.

- Capacity from 15 to 150 Ton
- Limited maintenance and inspection costs
- Full support for all types of hull
- Highly manoeuvrable towed trailers
- Made from the strongest materials

01283 208891

[pontoonanddock.com](http://pontoonanddock.com) • [sales@pontoonanddock.com](mailto:sales@pontoonanddock.com)





exhibition surface of 900 m<sup>2</sup>, all sorts of period military artefacts and maps of the battle. The rich collection includes weapons, vehicles, uniforms and mockups.

The building was used as the headquarters of the French and the allied troops during the battle of Dunkirk.

For further information  
on the offers please contact:  
**Dunkerque Marina**  
+33 (0)3 28 63 23 00  
[accueil.gdlarge@dunkerque-marina.com](mailto:accueil.gdlarge@dunkerque-marina.com)

## CALL AT DUNKIRK IN THE TRACKS OF THE LITTLE SHIPS

Christopher Nolan's movie Dunkirk, released in the summer of 2017, is set against the background of Operation Dynamo. On 10th May 1940, Germany invaded the Netherlands, Belgium and Luxembourg. The French and British troops, which had been positioned along the French-Belgian border during the phony war, entered Belgium and Holland to engage the Germans. However, they were not able to stop the German advance and had to retreat to the Dunkirk beaches. 400,000 soldiers were

caught in a trap, a small perimeter relentlessly bombed by enemy aircraft. Around a thousand British and French ships of all kinds, including yachts, managed to evacuate 338,000 men to England in only nine days.

Call at the Dunkirk Grand Large marina, visit the Dunkirk 1940 museum and walk in the footsteps of these heroes.

2 nights at the Grand Large marina, admission for two to the Dunkirk museum and a meal at a reduced rate on board the prestigious paddle steamer

Princess Elizabeth.

The Princess Elizabeth is an iconic vessel, moored at the docks near the town centre. In 1940, she sailed four times to Dunkirk, rescuing 1,673 soldiers in total. The paddle steamer also plays a role in the film Dunkirk. The ship now houses a gourmet restaurant, a bar and a terrace.

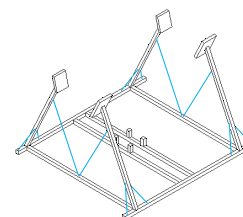
The setting is extraordinary and, surrounded by history, one enjoys a refined cuisine. The ship is a highlight on the remembrance trails.

The Dunkirk Dynamo museum displays, on an



We're the **UK's leading** manufacturer of **boat & yacht cradles**

Ask us about our extensive award winning range



VISIT [TENNAMAST.COM](http://TENNAMAST.COM) | CALL US +44 (0)1505 503824 | EMAIL [SALES@TENNAMAST.COM](mailto:SALES@TENNAMAST.COM)





# DURA COMPOSITES

Leading global supplier of innovative composite products for flooring, structures, façades, and handrailing solutions, Dura Composites of Clacton-on-Sea in Essex has recently been presented with their official grant of appointment and commemorative crystal bowl by the Lord-lieutenant of Essex Jennifer Tolhurst, as part of their 2017 Queen's Award for Enterprise success.

Celebrating the best of British business, the Queen's

Award recognises companies who are making an outstanding contribution to enterprise. As an award winner, representatives from Dura Composites were invited to attend a reception at Buckingham Palace in July this year, where they had the pleasure of speaking with Her Majesty the Queen. A Gala Dinner was then held in September and was enjoyed by all the 2017 award winners alongside Her Royal Highness the Princess Royal, who offered words of congratulations and support.

This year Dura Composites is amongst an elite group of 176 recipients of the award – including just 15 businesses in the whole of the East of England region, and are proud to represent the Tendring District as their only winner this year. Over 85% of this year's Queen's Award winners are small businesses which is testament to the fundamental role that businesses like Dura Composites are playing and will continue to play in growing the economy.

Last week Dura Composites celebrated their accolade with their Queen's Award ceremony. Attended by the company's 61 employees, local suppliers and dignitaries including: the Lord-lieutenant of Essex Jennifer Tolhurst and her husband Mr Philip Tolhurst, the Vice Lord-Lieutenant Jonathan Douglas-Hughes and several representatives from the Tendring District Council, including Chairman Councillor Mark Platt, and Chief Executive Ian Davidson.

Held at the company's main headquarters in Clacton-on-Sea, the Lord-lieutenant of Essex presented Dura Composites' Managing Director Stuart Burns with an official grant of

appointment signed by Her Majesty the Queen and British Prime Minister Theresa May, followed by the presentation of a commemorative crystal bowl. Dura Composites' Managing Director Stuart Burns said: "This award recognises our talented and committed workforce and comes at a really exciting time as we look to the future and the continued growth of our product portfolio. Many of our innovations such as our Dura Slab trench covers and Dura Platform GRP station platforms have revolutionised the categories for which they were designed and help to solve the key design challenges facing everyday businesses. Everyone at Dura Composites is

immensely proud and honoured to receive this award, which we are sure will be a springboard for further success both in the UK and Overseas." Tendring District Council's Chief Executive Ian Davidson said "It was a great privilege to witness one of Tendring's own businesses receive such a prestigious and sought-after accolade which recognises true excellence. It is fully deserved and Dura Composites are following in the footsteps of such household names as Jaguar, Dyson, Land Rover and Siemens. It really doesn't get any better than that."

For more information about Dura Composites, visit the website at [www.duracomposites.com](http://www.duracomposites.com)



“  
**Win the Queen's Award for Enterprise**





# GOLD ANCHOR

Global Marina Accreditation



The Global Gold Anchor Scheme  
235 accredited marinas across 23 countries

Providing the template for continual improvement at your marina. As the Gold Anchor brand grows, so will its value as a driver of new business to your marina.

 The Yacht Harbour Association  
[www.tyha.co.uk](http://www.tyha.co.uk)

 Marina Industries Association  
[www.marinanet.au](http://www.marinanet.au)

doradelaw

[www.doradelaw.com](http://www.doradelaw.com)

Experts in legal matters affecting  
Marinas, Ports  
and Harbours.

Contact us, call +44 (0)1803 835187  
or email [info@doradelaw.com](mailto:info@doradelaw.com)



## High Quality Courtesy Marina Trolleys



Deep sided

**Mark 2**  
**Standard:**  
865x710x150mm  
P.O.A.

**Deep sided:**  
865x710x250mm  
P.O.A.

All trolleys feature hot-dipped galvanised chassis, short rear leg for use on access ramps, perfectly balanced for easy manoeuvrability, wheels with roller bearings and workmanship guaranteed for 10 years.



Standard

**Mark 4**  
**Standard:**  
1220x635x150mm  
P.O.A.

**Deep sided:**  
1220x635x250mm  
P.O.A.



**Float Option**  
P.O.A. per trolley

**Lock System Option**  
P.O.A.

**Pneumatic Wheels**  
P.O.A. per trolley

Tel: 01283 790320

Visit: [www.aceequip.co.uk](http://www.aceequip.co.uk)

**BRITISH MADE**  
for Quality



## FAMBRIDGE YACHT HAVEN TEAM WEAR THEIR BEST PINK ATTIRE FOR CHARITY

For one day only, the Essex-based marina turned pink in aid of Breast Cancer Now, raising £1,949 for the charity.

The team at Fambridge Yacht Haven undertook their daily marina duties in a variety of pink outfits and headdress for the popular 'Wear It Pink' day in October. Pink cakes were sold in the Marina Office, while a raffle, bingo and evening BBQ all took place at West Wick Yacht Club's clubhouse with berth holders and a variety of marine businesses at Fambridge all taken part.

But, undoubtedly, the most popular fundraising activity was



the 9 hours of sponsored silence by Yard Manager Paul Wiggins. Paul undertook his entire duties for the day, including the lay-up of many winter boats, in complete silence – much to the pleasure of his colleagues!

Marina Manager Danyal Adams commented on the day saying, "It was such fun and the

response from our customers was overwhelming. Everyone in our staff knows someone who has been affected by Breast Cancer so we were very keen to take part in the Wear It Pink day to raise funds for the charity. On behalf of the whole team, we extend a big "thank you" to all our berth holders and the other businesses on-site who got involved in the day." The national 'Wear It Pink' day takes place every October raising money for life-saving research into breast cancer. Since 2002, the day has raised over £30million making it one of the largest fundraising events in the UK.



# Fibreglass Marina Decking



## Marina Deck has one of the highest degrees of slip-resistance ever measured

### Applications:

Porticoes  
Fingers  
Jetties  
Fuelling areas  
Entrance gangways  
Islooring porticoes  
Piers  
Brows

### Benefits:

Low maintenance  
Anti-slip surface  
Long lifespan  
8mm or 12mm square mesh

Pet friendly  
Simple to install  
Minimal maintenance  
60 year+ lifespan

Dura Composites Ltd  
Dura House, Telford Road,  
Clacton-on-Sea,  
Essex CO16 4LP  
United Kingdom

Tel: +44 (0)1206 440292  
Fax: +44 (0)1206 436428  
info@dura.composites.com

[www.dura.composites.com/marinadeck](http://www.dura.composites.com/marinadeck)

**Marina Deck**

**dura™**  
composites

Industrial Rail Marine Landscaping Architectural



## CAMPER & NICHOLSONS MARINAS APPOINTS DAN HUGHES CMM AS CHIEF OPERATING OFFICER

Camper & Nicholson's Marinas announces the appointment of Dan Hughes CMM as the Chief Operating Officer (COO) with immediate effect. In this new role at Camper & Nicholson's Marinas, Dan will be directly responsible for the day-to-day management and operational aspects within the C&NM portfolio. He will continue to provide invaluable advice and support to C&N's consultancy clients, implementing and monitoring management contracts and supporting the colleagues within C&NM's joint venture in Asia, Camper & Nicholson's First Eastern. Dan will also further assist the C&NM Board and Executive Committee in seeking new investment & development opportunities at principal marina locations on behalf of the Group.

Dan Hughes has more than 25 years of direct marina management experience working with some of the most established marinas throughout the UK and worldwide. He also sits on the Board of the Global Marina Institute, a training organisation (formed to deliver marina training and certification with the aim of maintaining and increasing standards in Marinas across the world) and is the



current Chairman of the European Certificated Marina Managers ('CMM') Group.

Since 2012, Dan has been directly involved in over 45 projects all over the world including the refurbishment and redevelopment of St. Katharine Docks, London, UK; creating a more commercially viable marina, whilst offering a sense of place to berth holders, office tenants and visitors to the centre of London.

A 2018 project for C&NM's owned marina, Grand Harbour Marina in Malta, will be the reconfiguration and optimisation of the existing marina layout, to maximise the berthing space to further accommodate the growing number of larger superyachts requiring secure berths in the central Mediterranean.

Dan Hughes's experience across all elements of the marina business gives him invaluable insight into decisions with an eye for detail, operational efficiency and commercial success.

Clive Whaley, CEO, Camper & Nicholson's Marinas comments, "We are delighted to announce the appointment of Dan Hughes as COO. The Camper & Nicholson's Marinas business has seen significant improvement with a Compound Annual Growth Rate of 13% in the operating performance of our owned marinas over the past 5 years, which has been complimented by the astute and rigorous approach to consistently maximising the commercial potential of all of our marina interests."

Dan Hughes comments, "It is with great pleasure to be appointed in this new role within Camper & Nicholson's Marina's business at such an exciting time in the company's development. I am looking forward to continuing my commitments to the marina projects currently under-way, along with working closely with my colleagues to help create new opportunities for the existing businesses moving forward."



# MULTI-MOVER<sup>®</sup> UK

**MULTI-MOVER<sup>®</sup> UK**  
Electric Tow Tug

The Multi-Mover electric tow tug enables you to move your trailer or cart easily, safely and precisely over a flat or even slightly sloping surface.

- Push and pull up to 40,000 kg
- Quick recharging
- Compact and versatile
- Suitable for indoor and outdoor use

**01952 771264**  
**multimover.co.uk • sales@multimover.co.uk**



## HASLAR MARINA HELPS SOLENT SEAL COUNT

**T**he secrets of the Solent seal population have been revealed by a new aerial survey by the Hampshire & Isle of Wight Wildlife Trust, with the support of staff and berth holders at Dean & Reddyhoff's Haslar Marina.

The survey found that a minimum of 49 harbour seals, including 11 pups and 7 grey seals, are currently resident in the Solent. The areas surveyed were Langstone Harbour, Chichester Harbour, Portsmouth Harbour, Ryde sand banks, Beaulieu and Newtown Creek.

Hampshire & Isle of Wight Wildlife Trust has been counting the seal population since 1994, when just 3 harbour seals were recorded. The survey takes place each August, when the seals moult and spend more time ashore.

Haslar Marina Manager Ben Lippiett said "Our berth holders

have enjoyed seeing seals around the Solent this year, and we are delighted to have been able to help the Wildlife Trust with this important conservation work. This is the start of an ongoing relationship for Dean & Reddyhoff, as we work with our local Wildlife Trusts on environmental projects from

### "Aerial Survey Reveals Secrets of the Solent"

citizen science projects to beach cleans and promoting sensitive boating."

Rayner Piper, Secrets of the Solent Project Manager at Hampshire & Isle of Wight Wildlife Trust said: "Our huge thanks to marina operator

Dean & Reddyhoff for helping make the survey happen and to pilot Steve Tyas. We now know that our Solent seals seem to be slowly increasing in numbers, which is great news as elsewhere in the UK, harbour seal populations are in steep decline. We're looking forward to next year's survey, which we hope will show more population growth."

The survey was made possible thanks to fundraising by Haslar Marina berth holders and staff, which paid for the flight and sourced the plane and pilot. In addition, over £1000 was made available to the Trust for further local wildlife and environmental work. Every year Dean & Reddyhoff staff and customers raise thousands of pounds for local charities at the ever-popular berth holders' summer parties and through activities like our Big Green Bike Ride.



## ANOTHER SUCCESSFUL YACHT HARBOUR BUILT BY WALCON...

**Walcon Marine Ltd (Head Office)**  
Cockerell Close, Segensworth West,  
Fareham, Hampshire PO15 5SR

**T:** +44 (0) 1489 579977

**F:** +44 (0) 1489 579988

**E:** [sales@walconmarine.com](mailto:sales@walconmarine.com)

**www.walconmarine.com**

**Walcon Marine Benelux**

**T:** +31 (0) 38 385 9559

**E:** [info@walconmarinebenelux.com](mailto:info@walconmarinebenelux.com)

**www.walconmarinebenelux.com**

**Walcon Marine Italia**

**T:** +39 (0) 33 562 22461

**E:** [info@walconmarineitalia.com](mailto:info@walconmarineitalia.com)

**www.walconmarineitalia.com**

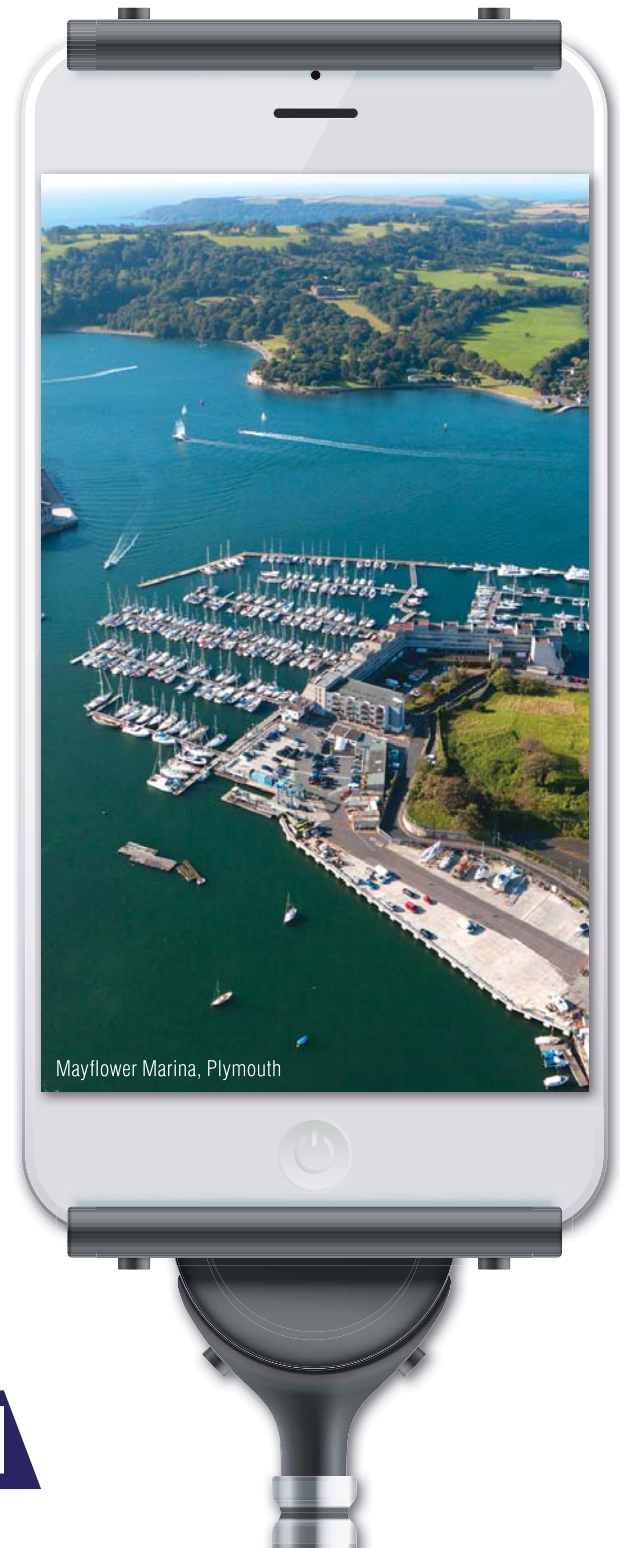
**Walcon Marine Australia Pty Ltd**

**T:** +61 (0) 8 9583 3982

**E:** [enquiries@walconmarineaustralia.com.au](mailto:enquiries@walconmarineaustralia.com.au)

**www.walconmarineaustralia.com.au**

# WALCON





# The QUANTUM

A powerful blend of design, strength & adaptability



“

*We have been very happy with the service we have received from Rolec over the years, and this time too. The installation went really well and the products are excellent.*

*Rolec's Quantum is a brilliant marina service pedestal, we would certainly install these again in the future.*

**Grahame Armer**

Managing Director  
Windermere Aquatic Limited

”



Strong  
& Durable



LED Amenity  
Lighting



IP65  
Weather Proof



UV  
Stabilised



Internal Electric &  
Water Segregation



CE  
Certified